



**2020 - 2021 OKEECHOBEE COUNTY**

# **School**

## **Information Guide**

**School Starts: Monday, August 17, 2020**



**(863) 763-3937**

**606 North Parrott Avenue • [www.biglakeeyecare.com](http://www.biglakeeyecare.com)**

***Call now to schedule your eye appointment!***



*Re-Elect*  
**DAVID  
HAZELLIEF**

**Your fiscally responsible candidate  
with a proven track record  
for  
County Commissioner District I**

**Working as a Team,  
Your Current Commission**

- Lowered Millage Rates
- Improved County Infrastructure for future growth
- **\$11,300,000** in grants secured
- Rehabilitation of drainage and roadways

**I Personally Offer  
Experience & Commitment**

- 3 terms as a County Commissioner
- Life-long self-employed local business owner
- Fourth Generation Resident
- Decades of civic service to our community



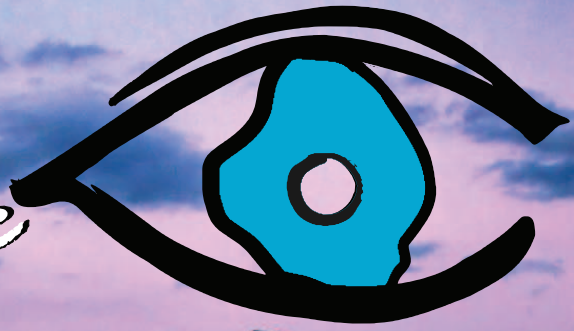
From my family to yours, I hope you and your family are staying safe and well during these trying times.

The Okeechobee County Commissioner District 1 seat will be decided Tuesday, August 18, 2020. No matter your party affiliation or district in which you live, you can vote for this elected position. I would appreciate your continued support.

Paid for by David Hazellief, Rep, For County Commissioner



# Big Lake *Eye Care*



Board Certified Optometrist • Call Now For An Appointment • Walk-ins Welcome

**Dr. Charles W. Bartels**  
Board Certified Optometric Physician  
**(863) 763-3937**

PRESENT THIS BOOKLET AND RECEIVE  
**\$25** toward any  
purchase or exam

May be used by multiple family members at time of visit.  
Must be presented at time of visit. Use of one Gift Certificate per person.

- Comprehensive Eye Exams
- Contact Lens Fitting
- Variety of Colored Contacts
- State of the Art Optical Service
- Glaucoma Exams & Treatment
- Diabetic Eye Exams
- Cataract Evaluations
- Foreign Body Removal
- Tests & Treatments for Dry Eye

We Accept & Bill Most Major Insurance, Medicaid, Medicare & BCBS Healthy Kids

606 N. Parrott Ave - Okeechobee - 863-763-3937 - Visit: [www.biglakeeyecare.com](http://www.biglakeeyecare.com)





# Welcome Back Letter

## Superintendent of Schools



**Ken Kenworthy**

Wow! What a way to begin the school year. Our high school has been deemed eligible for replacement. We are opening up a virtual school with over 1,000 students. Our food services and transportation departments served over 200,000 meals to keep our children fed this summer. Our Bass Club was named Club of the Year, yet another State FFA Officer was elected, and we had our first student ever to earn all ten NATEF industry certifications on the automotive program. And oh, by the way, we have the State Teacher of the Year! None of this would have been possible without our PreK-12 teachers and staff, parents and community members providing instruction, services, support and opportunities. This illustrates how blessed we are in Okeechobee.

All of this occurred during the last five months when school wasn't even in session. Imagine what we can do when the students return. We have opened up two new instructional options this year to provide additional flexibility and comfort for families that are not ready to return. It is our hope to see many of you return to face-face in the future.

Recognizing being shut down for the past five months has taken its toll on our students. Student achievement gaps have grown. Despite the best efforts of our teachers, administrators and staff, transitioning to online learning was a learning experience to say the least, just not the rigorous academic learning we are used to providing face-to-face. That being said, we have retooled. Our new virtual program is rigorous and focuses on grade level material aligned to the Florida Standards. This will elevate our online platform. Please be advised that this is nothing like the last 9 weeks of school. We have established pacing guides for each course, minimum requirements for lesson completion in every course every day, and our virtual option requires reliable internet access for many hours of instruction per day. This is unlike the relaxed atmosphere created at the end of last year. It will be drastically different.

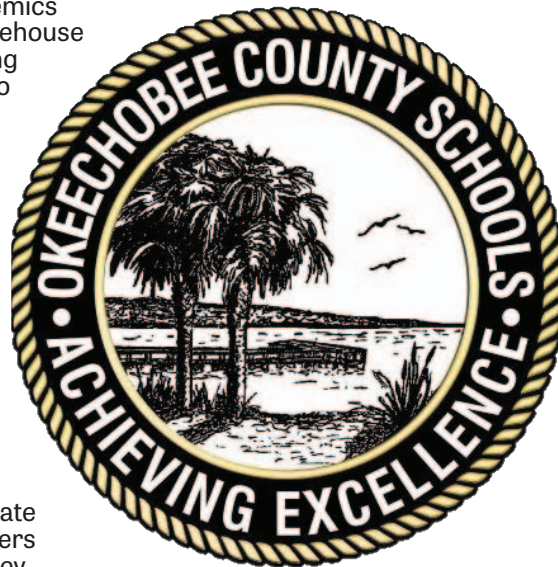
The shutdown has also impacted the emotional health and well-being of everyone, students included. This is one of the reasons why we are rolling out Branching Minds. The district-wide implementation of Branching Minds includes a revamp of our response to intervention systems that focus on academics and behavior. This data warehouse will help us identify struggling students and create a plan to get them the help they need and back on track. One of the main goals of this streamlined process is to allow school support staff the ability to devote more time to those in need.

If I have one thing to ask, it is to work with us during the transition and implementation of all that is new. This year will require patience, understanding, compassion and kindness as we all navigate going back to school. Teachers are working very hard, as they

always do, to make the return of students a success. Our staff is training in COVID-19 mitigation strategies to increase the safety on each and every campus. Our community often turns to schools in times of crisis. We want to be here for you, but please recognize that we are encountering new situations that need to be addressed everyday as well. We ask for your understanding.

Part of our reopening plan is to limit access to schools in an effort to prevent the spread of COVID-19. We hope that you understand that escorting your child to class is not possible for the time being. However, we are having virtual open houses, school advisory council and PTO meetings to keep you informed. Feel free to communicate with your child's teacher through email. We promise to revisit this as soon as we can. If you have specific questions, please email or call your child's school. For more general questions, please feel free to email the district at [okeehelpdesk@okee.k12.fl.us](mailto:okeehelpdesk@okee.k12.fl.us).

Let's make the start of 2020-21 a positive one and help one another navigate the obstacles placed in our way for, together, we can make this year a success. We can't do it without you.





# OKEECHOBEE VALUE SPECS

— South Parrott Eye Care Services —



**Later Hours 5 Days A Week!**  
**Monday - Friday**  
**9am - 6pm**

**Schedule An Appointment**  
**Online At**  
**[okeechobeevaluespecs.com](http://okeechobeevaluespecs.com)**

# 2 Pairs Of Glasses for \$79

RESTRICTIONS APPLY

- Comprehensive Eye Exams -
- Contact Lens Fitting -
- Glaucoma Exams & Treatment -
- Diabetic Eye Exams -

**Most Insurances Accepted**

**1611 South Parrott Ave - Okeechobee, Florida - 863.357.2250**



# Okeechobee County Schools Start & End Times

## 2020-2021

Regular school day - start and end times		
	Start Time	End Time
Okeechobee High School	7:05 a.m.	2:10 p.m.
Freshman Campus	7:10 a.m.	1:45 p.m.
Okeechobee Achievement Academy (middle/high)	7:20 a.m.	1:50 p.m.
Pre-K (located at OAA)	9:00 a.m.	2:30 p.m.
Middle Schools (Osceola & Yearling)	9:00 a.m.	3:40 p.m.
Seminole Elementary	7:57 a.m.	3:15 p.m.
Head Start at Seminole	8:00 a.m.	2:30 p.m.
Central, Everglades, North, South Elementary & OAA elementary	8:10 a.m.	2:50 p.m.
Pre-K ( located at South)	9:00 a.m.	2:50 p.m.

Early Release Dates for 2020-2021 school year	
Friday, September 11	Friday, February 05
Friday, November 20	Friday, April 23
Friday, December 18	Thursday, May 27

Early Release Day - start and end times		
	Start Time	End Time
Okeechobee High School	7:05 a.m.	10:50 a.m.
Freshman Campus	7:10 a.m.	10:25 a.m.
Okeechobee Achievement Academy (middle/high)	7:20 a.m.	10:30 a.m.
Pre-K (located at OAA)	9:00 a.m.	11:15 a.m.
Middle Schools (Osceola & Yearling)	9:00 a.m.	12:20 p.m.
Seminole Elementary	7:57 a.m.	11:55 a.m.
Central, Everglades, North, South Elementary & OAA Elementary	8:10 a.m.	11:30 a.m.
Pre-K (located at SES)	9:00a.m.	11:30 a.m.



Elect **Mark**

**BRANDEL**

FOR  
**COUNTY COMMISSIONER  
DISTRICT 1**

*“A fresh voice for Okeechobee”*

- ★ Fiscal Conservative
- ★ Proper Plan for Growth
- ★ Balanced Decision Making
- ★ Effective Code Enforcement
- ★ Business Friendly Government
- ★ Skills Training for Our Youth



*Okeechobee Resident for 42 Years.  
State Certified General Contractor for 24 Years.  
United States Army Veteran*

POLITICAL ADVERTISEMENT PAID FOR AND APPROVED BY MARK BRANDEL, REPUBLICAN, FOR COUNTY COMMISSIONER DISTRICT 1

# DOH Reopening Guidance

The Florida Department of Health continues to monitor the state's response efforts to COVID-19 in Florida, the changing federal guidance, best practices during the COVID-19 disaster emergency and continues to adjust our response efforts as state officials and medical experts continuously monitor data during reopening to best combat this virus.

COVID-19 is a respiratory illness spread mainly through close contact from person-to-person. Symptoms may appear 2 to 14 days after exposure to the virus. The most common symptoms associated with COVID-19 are fever, cough, and difficulty breathing. If symptoms develop, keep your child home, except to seek medical care, and separated from others in the home as much as possible. A viral test is needed to confirm if someone has a current infection.

The best way to **prevent** illness is by limiting exposure to the virus.

- ♦ Maintain good social distancing (about 6 feet)
- ♦ Wash your hands often with soap and water
- ♦ If soap and water are not available, use hand sanitizer that contains at least 60% alcohol.
- ♦ Routinely clean and disinfect frequently touched surfaces.
- ♦ Cover your mouth and nose with a cloth face covering when around others

## Everyday Conduct a Home Screening of Symptoms

Conduct a daily home screening of



**Wear your mask to protect yourself and those around you.**

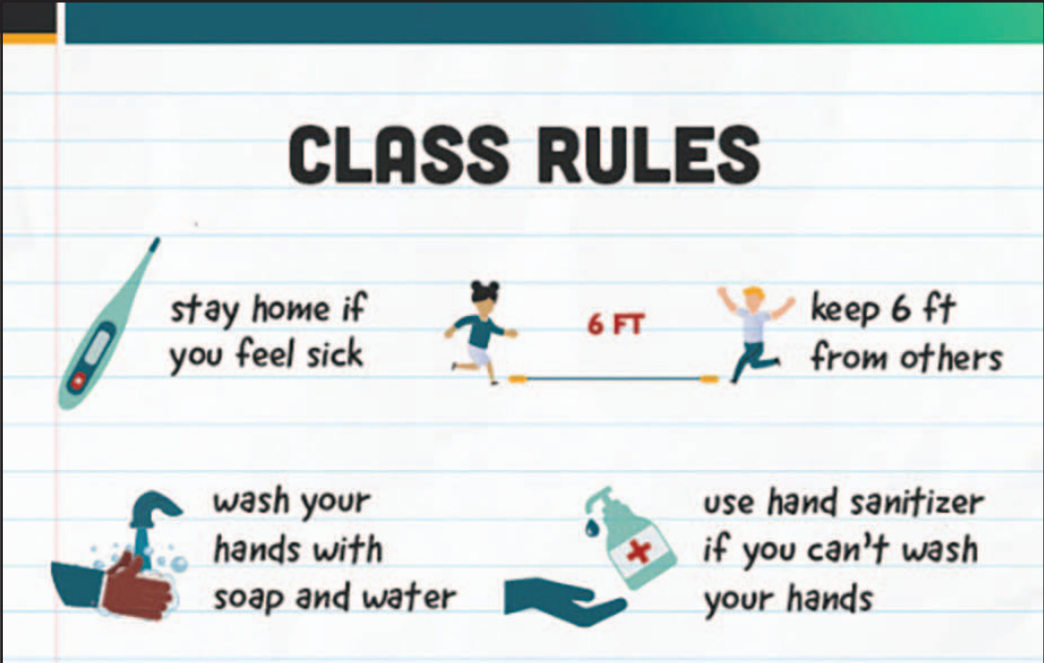
**Clean items used by multiple people with disinfectant.**

**Wash your hands with soap and water for at least 20 seconds.**

**Stay home if you are sick or have symptoms!**

Visit [FloridaHealth.gov](https://www.floridahealth.gov) for additional information.

 Safe. Smart. Step-by-Step.



## CLASS RULES

**stay home if you feel sick**

**6 FT**

**keep 6 ft from others**

**wash your hands with soap and water**

**use hand sanitizer if you can't wash your hands**

symptoms and protentional exposure to identify a possible illness that may decrease a student's ability to learn and put them at risk for spreading illness to others. Please use the CDC 'Daily Home Screening for Students' tool to check your child daily for these symptoms (see page 9).

## If you are experiencing symptoms of COVID-19

- ♦ Contact your medical provider and/or your local health department for evaluation to determine if

COVID-19 testing is recommended.

Stay home until you have no fever for at least 24 hours without fever reducing medication AND symptoms have improved (e.g. coughing, shortness of breath, diarrhea, vomiting).

## Department of Health Notification of Potential COVID-19 Exposure

- ♦ DOH-Okeechobee School Health Nurses, in coordination with the School District of Okeechobee County, will notify parents and



individuals who may have been exposed to someone at school who has been confirmed with COVID-19.

- ♦ The DOH will provide instructions on how to properly isolate, seek testing, seek medical attention if needed, and provide return to school and return to work criteria at the recommendation of the health department based on CDC guidance.

#### **CDC School Guidance Resources**

- ♦ CDC Screening K-12 Students for Symptoms of COVID-19 Limitations and Considerations: [cdc.gov/coronavirus/2019-ncov/community/schools-childcare/symptom-screening.html](https://cdc.gov/coronavirus/2019-ncov/community/schools-childcare/symptom-screening.html)

- ♦ CDC Guidance for Schools and Childcare Programs: [cdc.gov/coronavirus/2019-ncov/community/schools-childcare/index.html](https://cdc.gov/coronavirus/2019-ncov/community/schools-childcare/index.html)

#### **Don't Forget to Stay Up to Date with Recommended Vaccines**

- ♦ Before entering or attending school, each child must have an up to date Florida Certification of Immunization (DH 680 form) and a up to date school physical.

#### **♦ Public/Non-Public Schools Kindergarten through 12th Grade**

(Children entering, attending, or transferring to Florida schools)

- Four or five doses of DTaP
- Four or five doses of IPV
- Two doses of MMR
- Three doses of Hep B
- One Tetanus-diphtheria-acellular pertussis (Tdap)
- Two doses of Varicella (kindergarten effective with 2008-2009 school year, then an additional grade is added

each year thereafter). Varicella vaccine is not required if there is a history of varicella disease documented by the health care provider.

#### **♦ Additional Immunization Requirements for 7th Grade Entry**

Effective with 2009-2010 school year (then an additional grade is added each year thereafter), in addition to compliance with all other immunization requirements, children entering, attending, or transferring to the seventh grade in Florida schools must complete the following:

- One Tetanus-diphtheria-acellular pertussis (Tdap)

For more information, call the Department of Health Okeechobee COVID Call Center at: 863-462-5800. Press 3 Immediately.

## **CDC Daily Home Screening for Students tool**

### **SECTION 1: Symptoms**

If your child has any of the following symptoms, that indicates a possible illness that may decrease the student's ability to learn and also put them at risk for spreading illness to others. Please check your child for these symptoms:

<input type="checkbox"/>	Temperature 100.4 degrees Fahrenheit or higher when taken by mouth
<input type="checkbox"/>	Sore throat
<input type="checkbox"/>	New uncontrolled cough that causes difficulty breathing (for students with chronic allergic/asthmatic cough, a change in their cough from baseline)
<input type="checkbox"/>	Diarrhea, vomiting, or abdominal pain
<input type="checkbox"/>	New onset of severe headache, especially with a fever

### **SECTION 2: Close Contact/Potential Exposure**

<input type="checkbox"/>	Had close contact (within 6 feet of an infected person for at least 15 minutes) with a person with confirmed COVID-19
<input type="checkbox"/>	Traveled to or lived in an area where the local, Tribal, territorial, or state health department is reporting large numbers of COVID-19 cases as described in the <a href="#">Community Mitigation Framework</a>
<input type="checkbox"/>	Live in areas of high community transmission (as described in the <a href="#">Community Mitigation Framework</a> ) while the school remains open

# Okeechobee County School Board Progress Report and Report Card Schedule 2020-2021

First Nine-Weeks	Second Nine-Weeks	Third Nine-Weeks	Fourth Nine-Weeks
<b>Wednesday, Sept. 9</b> Send Progress Reports home	<b>Wednesday, Nov. 18</b> Send Progress Reports home	<b>Wednesday, Feb. 3</b> Send Progress Reports home	<b>Wednesday, April 21</b> Send Progress Reports home
<b>Thursday, Oct. 15</b> Last day of Nine-Week Grading Period	<b>Friday, Dec. 18</b> Last day of Nine-Week Grading Period	<b>Friday, March 12</b> Last day of Nine-Week Grading Period	<b>Thursday, May 27</b> Last day of Nine-Week Grading Period
<b>Monday, Oct. 19</b> Direct Entry completed by 9 a.m.	<b>Tuesday, Jan. 5</b> Direct Entry completed by 9 a.m.	<b>Monday, March 22</b> Direct Entry completed by 9 a.m.	<b>Friday, June 1</b> Print verifications by noon Direct Entry completed by 5 p.m.
<b>Tuesday, Oct. 20</b> Print Report Cards at school site	<b>Wednesday, Jan. 6</b> Print Report Cards at school site	<b>Tuesday, March 23</b> Print Report Cards at school site	<b>Tuesday, June 15</b> Report Cards printed
<b>Thursday, Oct. 22</b> Report Card Day (All Schools)	<b>Friday, Jan. 8</b> Report Card Day (All Schools)	<b>Friday, March 26</b> Report Card Day (All Schools)	<b>Tuesday, June 22</b> Report Cards mailed/available for pickup at Elementary
			<b>Friday, June 25</b> Report Cards (Middle schools, OFC, & OHS)

**BUY OR REFI**  
and get a...

**WIN!** Rates as low as **2.69% APR** up to 72 months  
**WIN!** No payments up to **90 days**<sup>2</sup>  
**WIN!** Up to **\$200** with a refi<sup>3</sup>

Apply today

midflorida.com

(863) 284-5626 or toll free (855) 560-5626

text LOAN to 64335

Branches throughout Florida

**MIDFLORIDA**  
Florida's community credit union

INSURED BY NCUA. www.midflorida.com



Offers valid as of July 15, 2020, and may be canceled at any time without notice. Eligibility requirements apply. Credit approval required. Existing MIDFLORIDA loans will not qualify for these offers. See an associate for additional fees and terms. 1. Rate valid for 2019 or newer vehicles only. A \$25,000, 72-month car loan with a rate of 2.69 % APR (Annual Percentage Rate) would have payments of \$376.39 per month. Other rates and terms available. 2. Offer valid for 2018 or newer vehicles only. Not all borrowers will qualify. No payment will be required for 90 days from date of loan closing; however, interest will continue to accrue. 3. To qualify for the \$200 incentive, borrower must refinance an auto loan from another financial institution of \$15,000 or more. Loans of \$5,000 to \$14,999 will receive a \$100 incentive. The incentive will be deposited to a MIDFLORIDA checking or savings account.



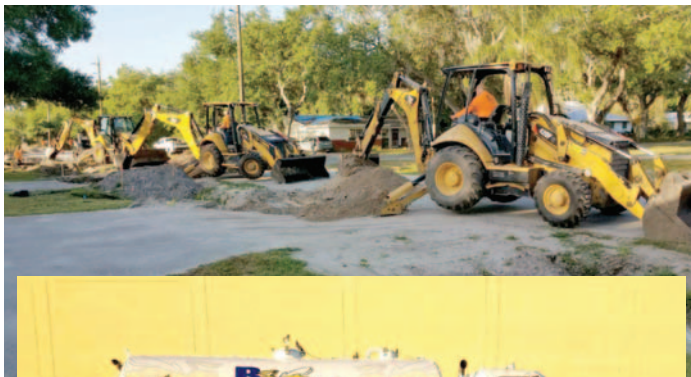


*We Work Like Bees to Satisfy Our Customers*

**Phil Baughman - Vice President**  
**863-763-6053**



*Praying for area  
 students, teachers & their families.*



- **Complete Site Preparation**
- **Septic Tank Installations, Repairs & Pump outs**
- **Land Clearing & Excavation**
- **Demolition**
- **Storm Drainage Installation**
- **Road Construction (Subbase, Base & Asphalt)**
- **All Types of Trucking & Hauling**
- **Shell, Sand, Top Soil & Gravel**

**1505-C South Parrott Ave. | Okeechobee, FL 34974**

# How will the School District of Okeechobee County keep Students and Staff safe

- Masks are required for students and staff where distancing is not possible.

- Extra cleaning procedures and precautions will be exercised on school sites following CDC recommendations.

- Temperature checks for students and staff upon entry to campus.

- Students will be required to wear masks on buses where social distancing is not feasible.

- We provided three options for student instruction to be delivered: Face to Face, Okeechobee Synch, and Okeechobee Virtual.

- Visitors, parent escorts to class, and volunteers will be limited during this pandemic. We will reevaluate this as soon as safe to do so.

- Movement on campus will be choreographed to ensure distancing opportunities are maximized.

- Students will have recess and time to socialize with friends; which is important for mental health.

- Students and staff will be isolated when they are showing symptoms.

- The Department of Health will be involved in all clinics and health related incidents.

- We will communicate with the Department of Health when incidents arise involving suspected COVID.

- The use of hand sanitizer and frequent hand washing will be reinforced throughout the school day.

- Athletics and extra-curricular activities must submit plans to ensure safety and guidance is followed.

- Social emotional and mental health supports will be available to all school district students.



- Large events and field trips will be minimized or altogether eliminated until environment is safe.

- Sharing of equipment, devices, materials, etc. will be minimized to eliminate potential exposure.

- Lunches will take place in a distanced environment to allow students to safely remove masks to eat.

- We trust that parents will: screen students before school, provide necessary PPE, and assist with cleanliness.

- Drop-off times have been adjusted to 7:45 a.m. at the elementary and middle schools to avoid mass gathering in cafeterias and to promote distancing while masks are removed to eat.

- Although not possible in every instance, class sizes have been reduced to provide distancing.

- Desks are being arranged to face one directions and clustering of desks have been eliminated.

- The district has advertised for temporary staff and expanded hours for current positions to mitigate COVID.

- Schools are arranging virtual open houses to eliminate mass gatherings which could lead to an outbreak.

- Be responsive to concerns and provide an email: [okee.helpdesk@okee.k12.fl.us](mailto:okee.helpdesk@okee.k12.fl.us) to capture those.







# Okeechobee County 2020-21 School Supplies Lists

## Pre-Kindergarten Essentials

- ☐ Glue Sticks
- ☐ Watercolor Markers
- ☐ Vinyl Folders\* (3 prong w/pocket)
- ☐ Crayons
- ☐ Highlighters
- ☐ Lanyard
- ☐ Rest Mat
- ☐ Blanket or Towel for Rest Time
- ☐ Complete Change of Clothes
- ☐ Personal Water Bottle
- ☐ Face Mask **REQUIRED**

## Kindergarten & First Grade Essentials

- ☐ Glue Sticks
- ☐ White Glue
- ☐ Vinyl Folders\* (3 prong w/pocket)
- ☐ Scissors
- ☐ Plastic Supply Box (Kindergarten)
- ☐ Crayons
- ☐ #2 Pencils
- ☐ Erasers
- ☐ Highlighters
- ☐ 1st Grade Writing Tablet (1st Grade)
- ☐ Zippered Pencil Pouch (1st Grade)
- ☐ Personal Water Bottle
- ☐ Face Mask **REQUIRED**

## Optional

- ☐ Backpack\* – No Wheels
- ☐ Three Ring Binder
- ☐ Composition Book
- ☐ Earbuds/Headphones
- ☐ Dry Erase Markers

## Second & Third Grade Essentials

- ☐ Glue Sticks
- ☐ Vinyl Folders\* (3 prong w/pocket)
- ☐ Scissors
- ☐ Zippered Pencil Pouch
- ☐ Crayons
- ☐ Colored Pencils
- ☐ #2 Pencils
- ☐ Erasers
- ☐ Wide-ruled Notebook Paper
- ☐ Highlighters
- ☐ Personal Water Bottle
- ☐ Face Mask **REQUIRED**

## Fourth & Fifth Grade Essentials

- ☐ Glue Sticks
- ☐ Vinyl Folders\* (3 prong w/pocket)
- ☐ Scissors
- ☐ Zippered Pencil Pouch
- ☐ Crayons
- ☐ Colored Pencils
- ☐ #2 Pencils
- ☐ Erasers
- ☐ Wide-ruled Notebook Paper
- ☐ Highlighters
- ☐ Ruler with Inches & Centimeters
- ☐ Personal Water Bottle
- ☐ Face Mask **REQUIRED**

## Optional for All Classrooms

- ☐ Tissues
- ☐ Zip-top Bags (elementary schools)
- ☐ Hand Sanitizer\*\*
- ☐ Disinfectant Wipes\*\*

## Middle School Grades 6-8 Essentials

- ☐ Earbuds/Headphones
- ☐ Glue Sticks
- ☐ Scissors
- ☐ #2 Pencils
- ☐ Colored Pencils
- ☐ Erasers

- ☐ Loose Leaf Notebook Paper
- ☐ Single Subject Spiral Notebooks (4)
- ☐ 1-3 Subject Spiral Notebooks
- ☐ Sticky Notes (pack of 100)
- ☐ Highlighters
- ☐ Index Cards (3x5, lined, packed of 100)
- ☐ Dry Erase Markers
- ☐ Page Protectors
- ☐ Binder Clips (medium)
- ☐ Personal Water Bottle
- ☐ Face Mask **REQUIRED**

## Middle School Subject Specific

- Pre AP Algebra I & Geometry:
  - ☐ Calculator: TI-30 XA
  - ☐ 1-3 Subject Spiral Notebook
- Band:
  - ☐ Three Ring Binder (1 inch)

## High School Grades 9-12 Essentials

- ☐ Earbuds/Headphones
- ☐ Glue Sticks/Tape
- ☐ Scissors
- ☐ #2 Pencils
- ☐ Colored Pencils
- ☐ Zippered Pencil Pouch
- ☐ Loose Leaf Notebook Paper
- ☐ Blue and/or Black Pens
- ☐ Single Subject Spiral Notebooks (1 per subject, per grading period)
- ☐ Exceptions below ♦
- ☐ Highlighters
- ☐ Index Cards (3x5, lined, packed of 100)
- ☐ Personal Water Bottle
- ☐ Face Mask **REQUIRED**

## High School Subject Specific

- Calculators:
  - ☐ Algebra I & Geometry: TI-30 XA
  - ☐ AP Chemistry, AP Environmental Science, AP Calculus: TI-84
- ♦ Five Subject Spiral Notebooks
  - ☐ All Science Courses
  - ☐ Pre AP English I
  - ☐ Geometry
  - ☐ Algebra 2
- Graph Paper:
  - ☐ Chemistry
  - ☐ AP Chemistry
  - ☐ Physics
- Composition Notebook:
  - ☐ Chemistry
  - ☐ Physics
- Art:
  - ☐ 9" x 12" Spiral Sketchbook

\* Please consider vinyl, plastic or poly folders and backpacks so they can be sanitized

\*\* Every classroom would appreciate additional COVID-19 supplies

**These are all generic lists. Your child's teacher may have a more personalized list.**

# 2020-2021 Okeechobee County School Board Instructional Calendar Revised 07/23/2020 due to COVID-19



## September 2020

## August 2020

## July 2020

S	M	T	W	T	F	S	S	M	T	W	T	F	S
			1	2	3	4	1		1	2	3	4	5
5	6	7	8	9	10	11	6	7	8	9	10	11	12
12	13	14	15	16	17	18	13	14	15	16	17	18	19
19	20	21	22	23	24	25	20	21	22	23	24	25	26
26	27	28	29	30	31		27	28	29	30			

New Teachers Report  
 Returning Teachers Report  
 Open House—TBA  
 Teacher Plan Day (No Students)  
**Students' First Day**  
 Holiday—Labor Day  
 Early Release Day for Students  
 Teacher Prof. Dev. Day (No Students)  
 End 1st Nine Weeks (47 42 Days)  
 Teacher Plan Day (No Students)  
 October 15  
 October 16

## December 2020

## November 2020

## October 2020

S	M	T	W	T	F	S	S	M	T	W	T	F	S
			1	2	3	4	1		1	2	3	4	5
4	5	6	7	8	9	10	6	7	8	9	10	11	12
11	12	13	14	15	16	17	13	14	15	16	17	18	19
18	19	20	21	22	23	24	20	21	22	23	24	25	26
25	26	27	28	29	30	31	27	28	29	30	31		

Early Release Day for Students  
 Fall Break Day (1st Make-up Day)\*  
 Fall Break Day (2nd Make-up Day)\*  
 Fall Break Day  
 Holiday—Thanksgiving  
 Fall Break Day  
 Early Release Day for Students  
 Last Day of School prior to Holidays  
 End 2nd Nine Weeks (40 Days)  
 End 1st Semester (87 82 Days)  
 Winter Break  
 Holiday—Christmas  
 Winter Break  
 December 28-31  
 January 1  
 January 4  
**January 5**  
 January 18

## March 2021

## February 2021

## January 2021

S	M	T	W	T	F	S	S	M	T	W	T	F	S
			1	2	3	4	1		1	2	3	4	5
3	4	5	6	7	8	9	7	8	9	10	11	12	13
10	11	12	13	14	15	16	14	15	16	17	18	19	20
17	18	19	20	21	22	23	21	22	23	24	25	26	27
24	25	26	27	28	29	30	28	29	30	31			
31													

Holiday—New Years Day  
 Teacher Plan Day (No Students)  
**Students' First Day Back After Holidays**  
 Holiday—Martin Luther King Day  
 Early Release Day for Students  
 Presidents' Day—No Teachers/No Students  
 End 3rd Nine Weeks (47 Days)  
 Spring Break—No Teachers/No Students  
 Teacher Plan Day (No Students)  
 Good Friday—No Teachers/No Students  
 Spring Break Day—No Teachers/No Students  
 Early Release Day for Students  
 May 27  
 May 27  
 May 27  
 May 27  
**Students' Last Day (180-175 Days)**  
 All 196/198 Day Teachers—Last Day  
 Holiday—Memorial Day

## June 2021

## May 2021

## April 2021

S	M	T	W	T	F	S	S	M	T	W	T	F	S
			1	2	3	4	1		1	2	3	4	5
4	5	6	7	8	9	10	6	7	8	9	10	11	12
11	12	13	14	15	16	17	13	14	15	16	17	18	19
18	19	20	21	22	23	24	20	21	22	23	24	25	26
25	26	27	28	29	30		27	28	29	30			

Report Cards sent home—Elementary  
 Report Cards sent home—Middle/High  
 \*In the event that school is closed due to a hurricane or other emergency, these are the first two days that will be used as "Make-up Days"  
 End 9-Week Period  
 No Teachers/No Students  
 Holiday  
 New Teachers Report  
 Student Day  
 Progress Reports  
 Teacher Plan Days/No Students  
 Report Cards  
 Early Release Days  
 Hurricane Day





## Julio 2020

		1	2	3	4	5
	5	6	7	8	9	10
12	13	14	15	16	17	18
	19	20	21	22	23	24
26	27	28	29	30	31	

2	3	4	5	6	7	8
9	10	11	12	13	14	15
16	17	18	19	20	21	22
23	24	25	26	27	28	29
30	31					

		1	2	3	4	5
	6	7	8	9	10	11
12	13	14	15	16	17	18
19	20	21	22	23	24	25
26	27	28	29	30	31	

Octubre 2020							Noviembre 2020							Diciembre 2020							
S	M	T	W	T	F	S	S	M	T	W	T	F	S	S	M	T	W	T	F	S	
				1	2	3	1	2	3	4	5	6	7				1	2	3	4	5
4	5	6	7	8	9	10	8	9	10	11	12	13	14	6	7	8	9	10	11	12	
11	12	13	14	15	16	17	15	16	17	18	19	20	21		13	14	15	16	17	18	19
18	19	20	21	22	23	24	22	23	24	25	26	27	28	20	21	22	23	24	25	26	
25	26	27	28	29	30	31	29	30						27	28	29	30	31			

The figure displays three calendar grids for the months of January, February, and March 2021. Each grid is organized with days of the week (S, M, T, W, T, F, S) as columns and weeks as rows. The dates are color-coded: 1 is pink, 8 is yellow, 15 is green, 22 is purple, 29 is yellow, and 31 is yellow.

Enero 2021						
S	M	T	W	T	F	S
					1	2
3	4	5	6	7	8	9
10	11	12	13	14	15	16
17	18	19	20	21	22	23
24	25	26	27	28	29	30
31						

Febrero 2021						
S	M	T	W	T	F	S
	1	2	3	4	5	6
7	8	9	10	11	12	13
14	15	16	17	18	19	20
21	22	23	24	25	26	27
28						

Marzo 2021						
S	M	T	W	T	F	S
	1	2	3	4	5	6
7	8	9	10	11	12	13
14	15	16	17	18	19	20
21	22	23	24	25	26	27
28	29	30	31			

April 2021

S	M	T	W	T	F	S
			1	2	3	
4	5	6	7	8	9	10
11	12	13	14	15	16	17
18	19	20	21	22	23	24
25	26	27	28	29	30	

May 2021

S	M	T	W	T	F	S
						1
2	3	4	5	6	7	8
9	10	11	12	13	14	15
16	17	18	19	20	21	22
23	24	25	26	27	28	29
30	31					

Junio 2021

S	M	T	W	T	F	S
		1	2	3	4	5
6	7	8	9	10	11	12
13	14	15	16	17	18	19
20	21	22	23	24	25	26
27	28	29	30			

ta  
en cerrados por un huracan o otra emergencia,

Fin de 9 semanas	Días de Clases	Informes de Progreso
No Maestros No Estudiantes	Día de Plan de Maestros No Estudiantes	Tarjetas de Informe
Día Festivo	Estudiantes Salen Temprano	Día de Huracán
Se Reportan Nuevos Maestros		

# Welcome Back Letter

## Central Elementary School

Central Elementary School is more than just a little excited to be welcoming our students back to school. In March, our dedicated teachers and phenomenal parents rose to the challenge of providing virtual instruction and support. Who knew we would be returning to school in August with a need for a face to face and virtual instructional plan with multi-option paths like Okeechobee Virtual & Synch. We know we will continue to have more challenges and we will face uncertainties, but we will have a successful year as we face it together!

For the past several weeks we have been preparing our school for reopening and getting things ready to go for social distancing, safer learning environments and revised school procedures. Arrival times will include temperature checks and dismissal will also have special procedures. Meal times, class times, recess and specials will look different, but allow our students to safely interact and get active. We will work hard with students to ensure they transition and adapt easily to the changes. Teachers and staff are also receiving training over the next two weeks to ensure that we are well prepared for cleaning protocols and instructional strategies to maximize student engagement while providing rigorous teaching and learning for your children. Please continue to check our Facebook page for parent newsletters that will highlight these changes, especially those that involve changes in arrival, dismissal, and upcoming Virtual Open House information.

We strive to continue our pledge of putting students first and we continue to commit to raise a strong culture of successful life-long learners, through the building of strong relationships. We will focus on safety, student achievement through rigorous and data driven instruction, character education, social-emotional well-being, and building a culture of reading in a diversity rich learning environment. We believe that all students are empowered to achieve success when immersed in a powerful learning community that values a diverse student body and is centered on core values as well as a shared commitment to achieving academic excellence. It is our belief that as we focus on our mission and vision for our students, our school grade will improve from the current C and rise to an A.

Meals will continue to be free for all students at Central Elementary and no application is needed. As part of the Community Eligibility Program (CEP) students will receive a breakfast and lunch at no cost to the family.

Meals will be packaged individually so students will not be able to purchase additional snacks. If you wish to donate snacks to the classroom, teachers would welcome your assistance. Our greatest need are items such as snack size food storage bags, tissues and hand sanitizer.

Let me take this opportunity to encourage you as we face this upcoming new school year. If last year proved one thing, it proved that we are stronger together! We will continue to prioritize family engagement this year and provide small group and individual opportunities where social distancing is possible to keep you informed of your child's overall progress during the school year. In closing, I want you to know that as I begin my second year as Central Elementary's Principal, I feel overwhelmed with gratitude to lead this incredible school and continue our great Panther tradition established in 1958. I am a student alumni, a teacher alumni and I am the proud Principal of all our Panthers - alumni included! Whether you are a new Panther or a returning Panther, my heart and my goal is to enjoy the background while our students shine in the limelight. I am confident that these amazing kids are going to change the world and achieve great things!

I look forward to working with you as we help each student at Central Elementary meet their goals and have a successful year.

Together we are committed. Together we are Central.

We are #ONECENTRAL

Be Extraordinary,

Cynthia Kubit

Principal, Central Elementary

Home of the Panthers!

#risetogether #bolderbraverstronger



Cynthia Kubit







## Dr. Kindell Wishes You a Great Start to a New School Year!

Everglades Pediatric Dentistry serves infants, children, teens, and patients with special needs in Okeechobee, Highlands County, and the surrounding areas

**MELISSA KINDELL, DMD**  
**CALL US TODAY! 863-357-7338**  
NEW PATIENTS WELCOME!

**Okeechobee location:**

2029 HWY 441 N  
Okeechobee, FL 34972

**Sebring location:**

5606 US 27 N  
Sebring, FL 33870

**MOST INSURANCES ACCEPTED**  
**EMERGENCIES ARE WELCOME**





# Which School Option is Right for Me?

Okeechobee students and families returning to public school will have three options from which to choose. School begins for all three options on August 17, 2020

## **Option 1: Traditional Face-to-Face**

Students will receive traditional face-to-face instruction from their assigned teacher(s). This is the most educationally sound model to ensure your child is meeting grade-level requirements and interacting with his/her teachers and peers daily. Open House will be conducted virtually. Please refer to your school's Facebook page and check your school email for more details.

### **Parent Responsibilities**

**Health screening.** Parents should conduct a daily health screening of each child before leaving home. If your child does not feel well, have been exposed to COVID, or is exhibiting any symptoms related to COVID, please keep him/her at home. Please notify the school if your child is ill, or has been exposed to COVID, so school protocols can be enacted if necessary.

**Provide required or necessary items.** Daily, parents should provide a face covering which fits your child well and is clean. Please ensure your child has a refillable water bottle to prevent the necessity of using a water fountain.

**Diligent personal care.** Parents should ensure their children have clean clothes everyday. Washing items often like jackets, sweaters, or hoodies can help eliminate a possible source of contamination. Gym or practice clothes should also be washed between wearings. Backpacks, shoes, lunch boxes, and all other non-porous items should be disinfected nightly.

## **Option 2: Okeechobee Sync**

In this option, Students will work from home synchronously with traditional students. Students will attend school remotely, following the standard school schedule and bell times. Synchronous teaching and learning via the internet is intended for students who will eventually transition back to traditional school. This model is designed for families who would like to maintain their connection to their enrolled school, but don't yet feel comfortable sending their student(s) back to school in August. The continuation of this model will be based on the COVID climate, is meant to be temporary and will be reevaluated each 9-week period. This option may be scheduled at the school level at the same time as face-to-face instruction is occurring (A) or in a class totally devoted to online instruction (B). **In the event of a classroom or building closure, Okeechobee Sync will be the default instructional method.**

### **Instruction**

**Attendance.** Student attendance will be

recorded and monitored just like a traditional classroom and will follow the District's attendance policies.

**Assignments.** Students will use traditional classroom instructional materials formally adopted by the district. Assignments and assessments will be accessed and submitted via Google Classroom or Schoology. Texts and student workbooks may be accessed online or a school may arrange for families to pick these up, if appropriate. Students or their parents, unless they have been exposed, will be required to pick-up and or deliver any assignments or instructional materials that cannot be submitted online.

**Communication.** Students and teachers will communicate via Google Meets (video conferencing) email, and/or phone calls. Parents and students should not attempt to meet with a teacher face-to-face without an appointment.

**Assessments.** Students will be required to complete progress

See **OPTION—**  
Page 19





# Welcome Back Letter

## Everglades Elementary

Welcome to Everglades Elementary School where we are proud of our school, our students, our staff, and the outstanding community of parents who provide wonderful support to our school. It is my pleasure to extend a warm welcome to you as you begin the 2020-2021 school year with us.

We are about to embark on a journey together as we begin this new school year. What an opportunity! We have the chance to bring our students back on campus not only to teach, but to love and guide them into the future. The faculty and staff at Everglades Elementary School are committed to embracing this school year with hearts full of love, a sense of perseverance, and a positive mindset. Our school strives to have a safe atmosphere where our children will experience success on a daily basis. We would like to reassure all of our stakeholders that the safety of our students and staff is our utmost priority. In the anticipated return of students to campus, our staff have worked diligently during the summer months to prepare for the safe reopening of our school and

the arrival of students for the 2020 – 2021 school year.

We are looking forward to hosting a Virtual Open House for all students in 1st through 5th Grade on Thursday, August 13th. We will provide an opportunity for all incoming Option 1 Kindergarten students to visit our campus prior to the first day of school on Monday, August 17th. Additional information regarding our plans for a Virtual Open House and inviting our incoming Option 1 Kindergarten students to visit our campus will be shared with all Everglades Elementary School families in the coming days.

We would like to extend an invitation for you to become an active member of our Parent Teacher Organization, School Advisory Council, and Parental Involvement Committee. We are happy to have you and your children with us at Everglades Elementary School.

The faculty and staff and I are looking forward to getting to know and work with all of you to ensure that each and every student in our school is safe and successful this year. To that end, we ask that all students



**Jenni Ellis**

come to school on time each day with all of their required materials prepared to do their best. Success is a team effort and every player, the students, the staff and the parents are all integral parts of that team. When every player does their best, everyone wins!

## OPTION

Continued From Page 18

monitoring (diagnostic) testing three times per year. Elementary students will be assessed in reading and math using iReady diagnostic and secondary students will be assessed using NWEA assessment. Other assessments may require students to record themselves taking an assessment and email the video to the teacher, take the assessment while the teacher is online as the proctor, or taking a picture of the student work and submitting it with an online assessment. Okeechobee Synch students will be required to take State Assessments (FSA and EOC) at a traditional school if applicable.

### **Option 3: Okeechobee Virtual**

### **School (OVS)**

Okeechobee Virtual School students will receive full-time online instruction completed at home, asynchronously and at their own pace. All students, including home education and private school students, are eligible to enroll in OVS Kindergarten through grade 12 virtual instruction programs. Families have the ability to influence their child's schedule, however, students are expected to work on lessons each school day. This full-time program must operate on the traditional school calendar and students are required to have all coursework completed on or before the last day of school. Okeechobee teachers will use Edgenuity (K-5)



and Edmentum (6-12) courseware closely aligned to the scope and sequence of OCSD's face to face instruction.

### **Requirements**

Families should make a **one semester commitment** to

See **OPTION**— Page 25

# Welcome Back Letter

## North Elementary

Welcome to the 2020-21 school year!

We are excited to welcome students and staff back on our campus! Recognizing that this summer has been challenging for many, we are committed to bringing back some normalcy and routines to our NES families. In addition to our traditional commitment of Achieving Excellence and Putting Students First, we have planned our work around indicators of success that were shared in the Reopening Florida's Schools and the CARES Act: keeping our education family safe and healthy, instilling confidence in our families to return to school safely and ready to succeed, focusing on student-centered outcomes, enabling parents to return to the workforce, and practicing compassion and grace in decision-making each and every day.

Our work this year will be guided by several exciting and promising initiatives. Without state assessment results from the spring of 2020, we are determined to have a laser beam focus on staff professional development to better support students' success. We are piloting an instructional coaching model that allows us to have both reading as well as

math and science coach on site to support quality planning and instruction. Our grade level teams are success oriented, and they are excited to meet their new students in the upcoming weeks!

Several safety measures will be implemented on campus this year that allow us ensure a healthy learning and working environment for all.

As we develop our guidance on new procedures, we would like to ask that families follow us on our North Elementary Facebook page to stay abreast of school updates (we can be found under NES Tigers). Our teachers will be utilizing electronic communication and messaging tools to stay in contact with families and share our students' successes each and every day. In addition to regular school-to-home communication from the classroom teachers, the primary guardians indicated in Skyward will be also receiving a weekly newsletter from the principal via e-mail. We would like to encourage our families to check their Skyward parent contact information prior to the school start to ensure that it is correct as many important updates will be shared via all-calls, text messaging, as well as e-mail.

For the best educational outcome as well as in an effort to limit unnecessary movement on campus, it is important that students arrive at school on time. Parent drop off starts at 7:45 AM, and we offer free breakfast and lunch to all students. Student handbooks will be sent home during the first week of school. These include important school policies and procedures – many of which are specific to the requirements stemming from the Department of Health guidelines as well as from the OCSB decisions about reopening schools in our county. Our classes begin promptly at 8:10 AM, and we dismiss our students starting 2:50.

While visitors are not allowed on campus, we will continue to provide opportunities for family events and workshops in a virtual format. Additionally, we would like to invite parents to contact us should they be interested in serving in our Parent Teacher Organization (PTO) or School Advisory Committee (SAC).

We cannot wait to see everyone soon either in class or online!



**Dr. Tuuli Robinson**



*Opening Doors is What We Do*  
**Hazellief & Prevatt Realty**  
(863) 763-2104 • Se Habla Español

**Residential ♦ Agriculture ♦ Commercial**



**David Hazellief, Broker**  
(863) 610-1553

**Sharon Prevatt**  
(863) 634-7069

**Lucy Olivarez**  
Office Administrator

**Carmen Guerrero**  
Accounts (Payable/Receivable)



**1200 South Parrott Ave.**  
**century21okeechobee.com**  
**admin@c21okee.com**





# Welcome Back Letter

## Seminole Elementary

Greetings Seminole Elementary families and friends.

Welcome to the 2020-2021 school year! Last school year we had much to celebrate!

- Our school grade increased by 41 points moving within 20 points of a 'B'.
- 3rd grade math achievement is the highest in the district and exceeds the state average by nine percent.
- 4th grade ELA achievement improved by eight percent.
- 5th grade math achievement is the highest in the district and exceeds the state average by six percent.
- 5th grade science achievement increased 14 percent and exceeded the state average by three percent.

Students will return to school on MONDAY, AUGUST 17, 2020. Our theme this year is from Michael Jordan: Focus like a laser, not a flashlight. The district and our school have taken extra precautions to ensure the safety and well-being of our students and staff. All will adhere to social distancing by utilizing 'six feet of excellence' (simultaneously extend one arm forward and the other backward to establish distance) when seated and walking the halls. A single flow traffic pattern is also marked on the sidewalks. Important reminders:

**SCHOOL HOURS:** 7:40 a.m. – 3:15 p.m.

### **STUDENT ARRIVAL/PARENT**

**DROP-OFF:** Students may arrive at 7:40 a.m. Pull down to the end of the sidewalk to the sign marked "Drop-off Here". BEFORE your child exits the vehicle, a staff member will take your child's temperature utilizing an infrared forehead thermometer. If your child has a temperature of 100 or higher, he/she will not be allowed to attend school.

**STUDENT ARRIVAL/BUSES:** A staff member will meet each bus and take student temperatures as they exit. Any student with a temperature of 100 or higher will be escorted to the designated sick clinic area to be assessed by the clinic aide.

**BREAKFAST/LUNCH:** Breakfast and lunch will be provided at no cost to all students. For breakfast, kindergarten

students will report to the cafeteria and grades 1 - 5 students will take a grab-and-go breakfast from centrally located food carts to eat in their classrooms. A lunch schedule has also been established to allow for students to eat in the cafeteria or in their classrooms. Students bringing their own breakfast and/or lunch should utilize nonporous (plastic lunch boxes).

### **ATTENDANCE/TARDIES/CHECK-**

**OUTS:** To the extent possible, we ask that students arrive on time and attend school everyday, all day. In the event you need to checkout your child prior to the end of the school day, we ask that you do so no later than 2:30 p.m.

### **DISMISSAL/PARENT PICK-UP:**

Students will be dismissed at 3:15 p.m. Designated areas will be marked for students to form socially distanced lines in the gated area near the flagpole. Pull down to the end of the sidewalk to the sign marked "Drop-off Here". The gate will be opened at 3 p.m., however be advised that a line of cars usually forms prior to this time.

**OPEN HOUSE:** Virtual open house for Grades 1 - 5 is scheduled for Thursday, August 13, 2020. The specific time for each grade level will be announced and recordings of each session will be provided. We will keep you informed regarding kindergarten open house.

**OPTION 2 STUDENTS:** Chromebook and textbook distribution is scheduled for Thursday, August 13, 2020 and Friday, August 14, 2020. Students are required to attend school virtually during normal instructional school hours, 7:55 a.m. - 3:15 p.m. Teachers will provide detailed information during Open House.

### **VISITORS/ACCESS TO FRONT**

**OFFICE:** Access to the office is limited to emergency situations, however we will gladly conduct telephone conferences or Zoom meetings should you need assistance. Contact the front office at: 863-462-5116 to schedule an appointment.

**INSTRUCTIONAL PROGRAMS:** The district and school's priority is to prepare students for college, careers and productive citizenship. All instructional programs are rigorous, well-rounded

and aligned to the Florida Standards. Teachers and paraprofessionals are credentialed and participate in ongoing professional development. Most importantly, high expectations are maintained by ALL staff for ALL students.

### **STUDENT AGENDAS & COMMUNICATION FOLDERS:**

ALL students will be provided agendas in grades 3 - 5 and communication folders in grades K - 5.

**SCHOOL SUPPLIES:** School supply lists are located on the Okeechobee County School District webpage or at this link: Official School Supply List Elementary 2020 - 2021

**PARENT INVOLVEMENT:** During Open House, you will have the opportunity to learn more about AND to join our School Advisory Council (SAC), Parent Teacher Organization (PTO) and Parent University. These organizations are opportunities for stakeholders to give input regarding our school budget, school improvement initiatives, fundraisers, school activities and student incentives. Parent University will provide workshops to help parents understand their children and to support academics in the home.

### **TEACHER/CLASSROOM RE-**

**QUESTS:** Administration has given great consideration in properly placing students in the most conducive classroom settings. Once a child has been placed, teacher/classroom requests will not be honored unless there are extenuating circumstances.

**TRANSPORTATION/BUSES:** Be sure your child as well as his/her teacher know how your child will get home. On the first day of school, send a note (and later write in the communication folder) parent pick-up OR your child's bus number AND your home address and contact information.

If you have any questions or concerns, please feel free to notify me at: 863-462-4116. You can also stay up-to-date by visiting our school website at: <http://seminoleelementaryschool.sites.thedigitalbell.com/> and liking us on Facebook at: <https://www.facebook.com/SeminoleElementary-ofOkee/?ref=bookmarks>. Enjoy the remainder of the summer.

# How to manage low bandwidth during remote learning sessions

In the wake of the COVID-19 outbreak, many schools hastily transitioned from traditional in-person learning to remote learning. This transition posed new and unique challenges to educators as well as students and their parents.

One of the biggest challenges posed by remote learning was keeping students connected to their teachers and their classmates, not all of whom had readily available access to devices that could facilitate such connections. In recognition of that challenge, school systems worked to procure devices for students only to be confronted by another challenge:

low bandwidth. According to Microsoft, bandwidth refers to the amount of data that can be transferred over an internet

connection per second. Low bandwidth can compromise students' ability to stay connected to their virtual classrooms. In an effort to help students overcome that challenge, Microsoft offers the following tips on how educators, students and parents can manage low bandwidth during remote learning sessions.

- ♦ **Reduce reliance on video during class sessions.** Turning video cameras off during live class sessions can help

to overcome the challenges posed by low bandwidth, as live video is a key contributor to excessive use of bandwidth. If video must be used, encourage students to turn off their cameras when they are not speaking.

- ♦ **Use pre-recorded content.** Pre-recording content enables students to stream video over the internet, saving those with low bandwidth the hassle of downloading large video files to their computers. Microsoft recommends educators who pre-record content for their students to stream to instruct those students to use class time to complete assignments. Educators can make themselves available via chat to answer questions students may have about their assignments.

- ♦ **Avoid video-based assignments.** It can be difficult for students with low bandwidth to send very large files, such as videos. Educators can help students avoid that issue by not requiring them to submit videos as part of their assignments.

- ♦ **Encourage students to sync files to their devices.** Each device is different and each manufacturer has its own instructions on how to sync files to devices. But Microsoft notes that syncing files to a device allows students to read them offline, which is ideal for students with limited internet connectivity.

Low bandwidth poses a challenge for remote learners. Thankfully, there are ways to overcome low bandwidth so students can keep learning.



An advertisement for 'Computer Repair Surfin' The Net'. It features a cartoon character of a computer monitor surfing on a wave. The background has a circuit board pattern. The text reads: 'Computer Repair SURFIN' THE NET', 'Your Hometown Computer Specialists', '709 N Parrott Ave, Okeechobee', '863-763-2045', and 'surfincomputerrepair.com'. There is also a small photo of a technician working on a computer.



# Welcome Back Letter

## South of Schools

Welcome back to our students and families! This is certainly a different start to the school year, but we are excited to see you all whether it be online or at the school. Our team has been working hard all summer to ensure our facility is clean and sanitized. We also want to ensure we are prepared to deliver high quality instruction to our students. Please find us on Facebook and "like us" so you can receive updates regularly. We also will be inviting you to download the Class Dojo app so we can stay in constant communication with you.

School safety for all children and staff is our priority at South Elementary. We adhere to district policies and implement safety protocols to ensure a safe learning environment for all students. Due to COVID-19, some of our policies have changed in order to maximize the safety of our students and staff. Visitors are not allowed on our campus, except for emergencies. Additionally, parents are not allowed to walk their child(ren) to class the first week of school. All car riders and walkers must be dropped off in the drop off line and will walk to our gate. We will have staff supervision throughout the campus to ensure all children receive breakfast and are taken to their correct classrooms.

Another change this year is that parents cannot begin dropping off children until 7:45 a.m. For drop off in the morning, one line is formed. Temperature checks are now required. A staff member will check your child's temperature. If their temperature is less than 100 degrees, the child will exit the car and walk on the sidewalk. For parent pick up in the afternoons, please stay tuned for more information as plans are made to provide social distancing while dismissing in a timely manner.

We believe that all children can succeed and are dedicated to ensure children learn in a safe, engaging, and nurturing environment. We are promoting literacy school-wide and want our students to love to read! Please help us by reading with your child at home. Did you know you can access thousands of books for free online if you have a library card? We will help you locate this amazing service! We also will regularly educate students regarding health and how we can keep one another safe. If you selected option one for your child, please remember masks are mandatory.

Our school will continue to focus on social-emotional learning this school year. All students will receive daily instruction in different categories of social-emotional learning. It is our responsibility to empower our students to communicate, cooperate, embrace diversity, and resolve conflict. We will be building healthy relationships and helping develop our children's compassion.

We love family involvement! Until social distancing is not required, we will host our family events this fall virtually. We hope you will join us at these! We appreciate your involvement in your child's education! Please ensure your contact information is up to date. I also post a Weekly Memo for families to keep you updated on school happenings. This is available on Facebook and also sent to your email address

and phone number listed in Skyward. It will also be shared this upcoming school year on Class Dojo.

We are so thrilled for this upcoming school year and cannot wait to see the successes among our students! Please stay tuned for information regarding our virtual open house. I am sure you have many questions. Please do not hesitate to reach out to me if I can answer any questions you may have! Although this year is not typical, one thing remains the same. We love your children and cannot wait to watch them SOAR this year!



Emily Streelman

 **#YourNeighborhoodPetShop**



**EXOTIC  
PET & MORE**

**We carry an extensive selection of exotic pets and supplies for all types of animals.** Our friendly knowledgeable staff are happy to help you find what you need and answer your questions.



- Lizards
- Snakes
- Amphibians
- Hand Fed Birds
- Mice & Rats
- Small Animals
- Freshwater Fish
- Turtles
- Crickets & Worms
- Aquarium Supplies
- Bird, Reptile &
- Small Animal Habitats
- Pet Food & Supplements
- Large Variety of Beta Fish

**Teacher Discount Offered for Pets in the Classroom**  
**113 South Parrott Ave. 863-484-8487**

# Exceeding Expectations at Osceola Middle School

This is Sean Downing and I am looking forward to the start of my eleventh year here at OMS as your principal. We have had a great summer and our staff has worked extra-hard to make sure that we are ready for students to return. Our world has changed greatly since we last saw you in March. While we have been tested, I would like to think this has been a fantastic opportunity for us to give thanks for one another and to appreciate this community and those who live in it! We are more committed than ever to make sure that we are here to listen to your concerns and to provide students with the absolute best education and services to ensure that ALL students can enjoy all of the benefits and realize their maximum potential. At OMS, success is ensuring we help provide a supportive and academically challenging setting that takes students in from the elementary schools and delivers them to Okeechobee Freshman Campus prepared and ready to flourish.

The faculty and staff at Osceola Middle say family a lot when interacting with our students and one another. Our top goal for the upcoming school year is to create that school family where we all look out for one another.

To that end, we want to offer more opportunities to get to know your school family, through online videos we will push out for open house, the OMS Campus Tour, and some of the Frequently Asked Questions for upcoming middle school parents and students, including your dress code questions (prior to the Florida Tax Free Holiday on August 7-9, 2020). If you are interested in additional information, please email me!



Sean Downing

I am committed to keeping you informed of what we do on our campus. If you would like to be included in my Warrior Weekly Update email, please update your email in Skyward or personally email me at [downings@okee.k12.fl.us](mailto:downings@okee.k12.fl.us) so I may include you. If you like watching from afar and would enjoy seeing pictures of the students during the multitude of activities on the campus, please "like" us on Facebook (@Osceola.Middle.Okeechobee)! We try to get something new on the Facebook page at least once a week (sometimes more often than that). Additionally, we have school information on our website so check us out online at <http://osceolamiddleschool.sites.thedigitalbell.com/>.

As the summer winds down, let me remind you that students entering seventh grade are required to show proof of vaccinations prior to issuing a schedule/admitting a student to class. If you have a question, please call the main office at (863) 462-5070. Additionally, fall sports tryouts happen right away when we return. Student-athletes are not permitted to try out for a middle school sport until we have a completed physical form/athletic packet on file with Mr. Perman, Athletic Director.

Finally, here are some dates for you to put on your calendar:

**Monday, August 17:** The first day of school for students.

**Wednesday, September 9:** Quarter 1 Progress Report Day.

**Friday, September 11:** Early Release Day.

Thank you for your continued support and trust in Osceola Middle School: Exceeding Expectations!

**GLADES**  
*Electric Cooperative, Inc.*  
*"Neighbors Working for Neighbors"*



**All the best to teachers and  
students this school year!**



*Learn with us year-round  
about programs, services,  
energy tips and more*

[WWW.FACEBOOK.COM/GLADESELECTRICCOOPERATIVE](http://WWW.FACEBOOK.COM/GLADESELECTRICCOOPERATIVE)

[www.GladesElectric.com](http://www.GladesElectric.com) 863.946.6200



# OPTION

Continued From Page 25

- ♦ Effective communication skills.
- ♦ Ability to recognize useful learning strategies that support success.
- ♦ Self-motivation to remain on track and engaged without constant teacher guidance.
- ♦ Strong reading, writing, and comprehension skills to follow directions and create new information.
- ♦ Basic technical skills for system and web navigation.

## Instruction

**Attendance.** Students work at their own pace, but should aim for 5–8 hours of studying per course, per week. Throughout their program, students should ask for help whenever it's needed and be able to recognize the difference between falling behind due to a lack of effort and a lack of understanding. Teachers, school counselors, and administrators will be monitoring

student pace regularly to ensure students do not get behind.

**Assignments.** Students work independently through professionally developed online school curriculum, lessons, and learning materials. Students have opportunities to meet with teachers and staff in the safe learning environment of the online classroom for guidance, instruction, and help when needed. Okeechobee Virtual School students will be supported by certified OCSB teachers. Teachers will maintain office hours which will be posted for each course. K-8 students will be assigned four core courses (English Language Arts, Math, Science and Social Studies) based on grade placement and two special area courses. High School students will work with school personnel to determine appropriate courses and electives (if available). Not all courses currently offered face-to-face will be available in the virtual format. Students may attend some elective courses on campus as scheduled with administrator permission.

**Communication.** Teachers will maintain office hours which will be posted for each course. The courseware provided through Edmentum and Edgenuity provides email access which is expected to be monitored multiple times per day.

**Assessments.** Students will be required to complete progress monitoring (diagnostic) testing three times per year. Students will be required to take State Assessments (FSA and EOC) at a traditional school if applicable.

## Instructional Supports and Progress Monitoring

OCSD will provide the full array of services that are required by law, including in-person instruction, specialized instruction for students with IEPs, and those from vulnerable populations, such as students from low-income families, students of migrant workers, students who are homeless, students with disabilities, students in foster care and/or students who are English Language Learners.

# Hi-Tek AUTOMOTIVE

Import and  
Domestic Specialist



We Install



129 NW 13<sup>th</sup> Street • Okeechobee

[www.Hi-TekAutomotive.com](http://www.Hi-TekAutomotive.com)

ACDelco

## 863-357-1717

Mon- Fri 8am - 5:30 • Sat. 8am -1pm

## YOUR SMILE SAYS IT ALL

We've been creating beautiful smiles in Okeechobee for over 35 years. Isn't it time to see what we can do for you?



Family Orthodontics

Making a difference one smile at a time

## 2025 Hwy 441 North 863.467.2332

# Okeechobee Achievement Academy

## Welcome Back, Students & Parents

I would like to welcome back all of our students, parents, teachers, and staff to the 2020-2021 school year. After months away from our students, our new and returning faculty are excited for their students to return. Our teachers will be focused on engaging and motivating students, knowing individual student needs, and



**Bryan Van Camp**

fostering academic and social success. OAA has a strong foundation in Positive Behavioral Interventions and Support (PBIS), earning Okeechobee County's first ever gold rating last school year. Through PBIS as well as partnerships with community and mental health organizations, we will continue to encourage and support our students to excel in the classroom and to succeed in the community.

We have expanded our academic programs this school year to offer two new acceleration programs for middle school and 9th grade students. We are also excited to continue our partnership with OHS through the Graduation Acceleration Program (GAP) which produced 37 early graduates during the 2019-2020 school year.

The faculty and staff at OAA will work diligently to know and grow your students. Your support, parents and guardians, is crucial to the academic process. Please encourage your student to come to school every day ready to be productive and successful. Daily, on-time attendance and open communication between teachers and parents are essential to building a relationship that results in student achievement. With your cooperation, we will make strides this year.

Due to circumstances with COVID-19, we will not have a traditional open house format. We will be reaching out the week of August 10th to share information regarding student schedules and transportation and answer any additional questions you may have. Students will report for the first day of school on August 17th. Please follow Okeechobee Achievement Academy on Facebook for updates.

Sincerely,  
Bryan Van Camp, Principal  
Okeechobee Achievement Academy

**Eli's**  
WESTERN WEAR, Inc.

If you missed the  
**Back To School Sale**  
don't worry you still  
have a chance to save!

**BUY 2  
GET 1 FREE**  
ALL JEANS  
OFFER VALID ON ALL MEN'S, WOMEN'S AND YOUTH JEANS  
SEE ASSOCIATE FOR DETAILS

**August 10th-  
16th, 2020**

**In store offer only**

**Okeechobee**  
907 NW Park St  
863-763-2984

**Arcadia**  
1011 East Oak St  
863-494-6088

**Dundee**  
27993 HWY 27  
863-439-6655

[www.eliswesternwear.com](http://www.eliswesternwear.com)



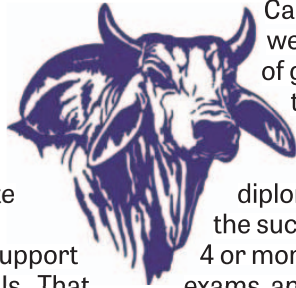
# Welcome Back Letter

## Okeechobee High School

The community, students, staff, and faculty all take part in telling the story of Okeechobee High School. Follow us on Facebook: @OkeechobeeHS or follow the hashtags: #GoBrahmans and #TheBrahmanWay

The Brahman Way refers to the tradition of "Excellence through P.R.I.D.E." while also addressing our school's mission to create a community of life-long learners who care and support one another as individuals. That could not be more appropriate in this ever changing educational climate. Though our traditions may have to be altered for a time, the spirit of Perseverance, Respect, Integrity, Determination, and Ethics will ring loud and true. Our Okeechobee graduates will walk away with more than a high school diploma; they will carry with them the same Brahman Pride that is found throughout this supportive community.

Though many of our Brahmans are approaching learning in a new a different way this year, we are doing so with a continued commitment to excellence and focus on each student's future. How are we preparing every student to be successful beyond high school? Becoming College and Career Ready gives every graduate the chance to start building a resume' or transcript that communicates their interests and work ethic. Every student has the opportunity to take courses that will lead them toward post-secondary success. Rigorous courses on our campus ensures that students are prepared for the next level, no matter where they begin. Our Advanced Placement (AP) offerings have continued to grow year after year. We are proud to offer AP Literature, Language,



Art, Chemistry, Environmental Science, World History, US History, Macroeconomics, Government and Politics, Psychology, Computer Science Principles, Spanish, and Calculus. This school year we will have our first group of graduates who have the potential to earn an AP Capstone diploma, a national honorary diploma distinction showing the successful completion of 4 or more AP courses and AP exams, and passing the task and AP test of the two Capstone courses, AP Seminar (Junior year) and AP Research (Senior year). Through our partnership with Indian River State College, students are able to be dual enrolled as a high school and college student. Last year Okeechobee High School graduated 20 high school seniors who had successfully completed an Associates of Arts degree from IRSC. Students are offered a wide array of courses in multiple disciplines. English, Math, Science, History, and Student Success courses are offered during the school day on campus and synchronously online. We are also fortunate to provide a shuttle that runs between the high school and the Dixon Hendry campus for our students to have access to Math and Education courses. Students have the potential to earn both college and high school credit for free if they are able to complete the course with a "C" or better. Our CTE programs continue to impress with the number of industry certificates earned during the school year. With last year's total topping out at 295 industry certs. Even during a pandemic, our CTE programs are stronger than ever. Notify your guidance counselor if you are interested in Health Science, Building Construction Technologies, Auto Maintenance



**Lauren Myers**

and Light Repair, Animal Science and Services, Technical Ag Operations, Aquaculture, Digital Design, and Digital Information Technologies. Many of our CTE programs have a professional relationship with community businesses and trade schools. Taking these courses allow students to gather information, earn nationally recognized professional certificates, and expand their career network while still in high school.

With everyone's safety in mind, Okeechobee High School will host a first-ever Virtual Open House. This brand new format will allow parents and students to click directly on his or her teacher's name to access important information about the course, individual classroom, and this upcoming school year. More information will be posted on our school Facebook page and emailed directly to the students and parents who have their email address saved in Skyward.

Parking stickers will be sold for those students who are attending courses in person on the OHS campus. Parking is not guaranteed and will be issued in a first-come, first

served basis. As in previous years, Seniors will be given the opportunity to purchase their parking passes first, on Tuesday, August 11 from 1:00 PM – 3:00 PM. Juniors will be able to purchase parking stickers on Wednesday, August 12 from 1:00 PM – 3:00 PM. All other students may come on Thursday, August 13 from 1:00 PM – 3:00 PM. To expedite the process for parking stickers, students must bring their Driver's License, Proof of Insurance, Vehicle Registration, and Drug Testing Permission slip. All students purchasing parking stickers on Tuesday and Wednesday must have a 2.0 GPA, and they must pay for any unpaid fines or fees. Juniors and Seniors that have a 3.5 or higher GPA will receive free parking. For all other students who have at least a 2.0 GPA, parking fees are \$40 per year. Students under a 2.0 GPA will be charged \$50 per semester. Students under a 1.5 GPA are not eligible to park on campus.

Communication is vital to your student's success. In order to receive a weekly email containing the highlights and events of the week, please make sure that you have added your email account to your student's Skyward. We welcome and encourage parent input and involvement. If you would like to be a part of our school advisory committee, please email me for more information. I can be reached at [myersl@okee.k12.fl.us](mailto:myersl@okee.k12.fl.us)

Daily decisions route your path to graduation. Are you



choosing to move forward? Class of 2021, this is your year! Every Senior in your seat at Graduation on May 28 at 7:00 PM.

Looking forward to learning and growing through every change this 2020-2021 school year!

Lauren Myers  
Principal

Lake Okeechobee News/Richard Marion



***For Success, Choose the Best!***



**Vicki S. Anderson, Licensed Real Estate Broker**  
Vice President, Okeechobee Board of Realtors



**Eric Anderson**  
Licensed Real Estate Broker

**(863) 634-4106 | [Vic\\_Anderson@earthlink.net](mailto:Vic_Anderson@earthlink.net)**
**(863) 634-4107**



**Shelly Doyle**  
*Licensed*  
*Real Estate Agent*  
**(863) 801-8463**  
[shellydoyle@ymail.com](mailto:shellydoyle@ymail.com)

## Your Top Realty Company in Okeechobee Your Family Can Trust to be There for You!

*Anderson Realty Co. is seasoned at aiding new and experienced buyers and sellers in all areas of real estate. Contact us if your needs include a real estate pro experienced at the business side of real estate!*

**21442 E. SR 78 — Buckhead Ridge  
Okeechobee, FL 34974**

**For All Of Our Listings, Please Visit Our Website:  
[www.AndersonRealtyCo.com](http://www.AndersonRealtyCo.com)**







# OKEECHOBEE HIGH SCHOOL

## AM BUS SCHEDULE

### 33 OHS AM

<u>TIME</u>	<u>LOCATION</u>
5:49 am	441 N & NE 290TH TRL
5:58 am	NW 392ND ST & NW 24TH DR
6:05 am	NE 342ND TRL & NE 4TH DR
6:09 am	NW 366TH TRL & BOX 476
6:13 am	NW 344TH ST & NW 25TH AVE
6:18 am	441 N & NE 325TH TRL
6:20 am	441 N & NW 308TH ST
6:23 am	NE 301ST BLVD & BOX 3255
6:27 am	NE 304TH ST & NE 65TH TER
6:28 am	NE 304TH ST & NE 69TH TER
6:32 am	NE 48TH AVE & BOX 27000
6:45 am	441 N & MAC 4 (17900)
6:55 am	OHS

### 16 OHS AM

<u>TIME</u>	<u>LOCATION</u>
5:51 am	NE 122ND DR & STATE ROAD 70 E
5:59 am	SE 132ND AVE & SE 34TH ST
6:01 am	SE 46TH ST & BOX 12913
6:04 am	SE 46TH ST & SE 138TH AVE
6:06 am	SE 128TH AVE & BOX 4951
6:21 am	SE 37TH TER & SE 6TH ST
6:23 am	SE 38TH TER & SE 8TH ST
6:40 am	OHS

### 24 OHS AM

<u>TIME</u>	<u>LOCATION</u>
5:52 am	NE 168TH ST & FIRE STATION
5:59 am	NE 224TH ST & LARSON 3
6:00 am	NE 224TH ST & BOX 4800
6:02 am	NE 224TH ST & TRIPLE S
6:14 am	NW 160TH ST & NW 12TH TER
6:18 am	NW 32ND AVE & NW 168TH CT
6:21 am	NW 38TH AVE & NW 167TH CT
6:30 am	NW 144TH DR & NW 9TH AVE
6:40 am	OHS

### 29 OHS AM

<u>TIME</u>	<u>LOCATION</u>
5:54 am	NW 192ND AVE & NW 304TH ST
5:56 am	NW 192ND AVE & NW 288TH ST
5:58 am	NW 192ND AVE & NW 280TH ST
5:59 am	NW 192ND AVE & NW 272ND ST
6:01 am	NW 192ND AVE & NW 256TH ST
6:15 am	NW 176TH AVE & NW 190TH RD
6:19 am	NW 176TH AVE & BOX 16636
6:33 am	NW 36TH ST & NW 38TH AVE
6:45 am	OHS

### 26 OHS AM

<u>TIME</u>	<u>LOCATION</u>
5:57 am	NW 144TH AVE & NW 304TH ST
6:00 am	NW 144TH AVE & NW 280TH ST
6:04 am	NW 144TH AVE & NW 264TH ST
6:07 am	NW 144TH AVE & NW 248TH ST
6:32 am	441 N & MAC 3 (207)
6:34 am	441 N & MAC 1 (18000)
6:39 am	441 N & NE 120TH ST
6:45 am	OHS

\*\*\*ROUTE STOPS AND TIMES ARE SUBJECT TO CHANGE\*\*\*



# OKEECHOBEE HIGH SCHOOL

## AM BUS SCHEDULE

### 01 OHS AM

<u>TIME</u>	<u>LOCATION</u>
5:58 am	441 SE & DOUGLAS
6:02 am	441 SE & BOX 11486
6:04 am	441 SE & BOX 10366
6:06 am	441 SE & SE 95TH TRL
6:08 am	441 SE & BOX 8485
6:09 am	441 SE & BOX 7777
6:10 am	441 SE & GATOR RV
6:13 am	441 SE & BOX 5320
6:14 am	441 SE & SE 50TH AVE
6:16 am	441 SE & BTWN SE 35TH & 36TH AVE
6:17 am	441 SE & SE 33RD TER
6:35 am	OHS

### 07 OHS AM

<u>TIME</u>	<u>LOCATION</u>
6:00 am	NE 128TH AVE & NE 79TH DR
6:09 am	NE 120TH ST & BOX 7480
6:20 am	NE 131ST LN & NE 26TH AVE
6:21 am	NE 131ST LN & NE 22ND AVE
6:22 am	NE 131ST LN & NE 18TH AVE
6:30 am	OHS

### 17 OHS AM

<u>TIME</u>	<u>LOCATION</u>
6:00 am	SE 87TH TRL & SE 68TH DR
6:02 am	SE 86TH BLVD & BOX 5957
6:03 am	SE 57TH DR & SE 89TH TER
6:05 am	SE 57TH DR & SE 81ST CIR
6:11 am	SE 57TH DR & SE 93RD TRL
6:18 am	SE 30TH PKWY & BOX 5945
6:30 am	OHS

### 02 OHS AM

<u>TIME</u>	<u>LOCATION</u>
6:04 am	BROADLAND LN & JULIUS TER
6:08 am	RUCKS DAIRY RD & BOX 2080
6:28 am	NW 56TH ST & NW 149TH TER
6:42 am	NW 3RD ST & BTWN 32ND AVE & 34TH TER
6:50 am	OHS

### 20 OHS AM

<u>TIME</u>	<u>LOCATION</u>
6:05 am	SW 21ST PKWY & SW 69TH TER
6:07 am	SW 21ST PKWY & BOX 7611
6:16 am	SW 9TH ST & SW 85TH WAY
6:18 am	SW 87TH TER & SW 5TH LN
6:19 am	SW 2ND ST & BOX 8552
6:25 am	SW 16TH ST & SW 40TH DR
6:27 am	SW 34TH TER & SW 18TH ST
6:28 am	SW 34TH TER & SW 22ND ST
6:50 am	OHS

### 10 OHS AM

<u>TIME</u>	<u>LOCATION</u>
6:10 am	NW 115TH DR & NW 2ND TER
6:11 am	NW 115TH DR & NW 3RD CIR
6:13 am	NE 110TH ST & NE 1ST WAY
6:16 am	NW 8TH AVE & 50' BEFORE NW 106TH ST
6:17 am	NW 8TH AVE & 50' BEFORE NW 102ND ST
6:18 am	NW 8TH AVE & NW 98TH ST
6:20 am	CENTER AVE & 50' BEFORE NE 98TH ST
6:21 am	NW 102ND ST & CENTER AVE
6:29 am	NE 54TH WAY & NE 59TH CT
6:31 am	NE 54TH TRL & NE 56TH PKWY
6:32 am	NE 54TH TRL & NE 52ND DR
6:33 am	NE 54TH TRL & BOX 2660
6:40 am	OHS

\*\*\*ROUTE STOPS AND TIMES ARE SUBJECT TO CHANGE\*\*\*





# OKEECHOBEE HIGH SCHOOL

## AM BUS SCHEDULE

### 30 OHS AM

<u>TIME</u>	<u>LOCATION</u>
6:10 am	NE 103RD AVE & NE 23RD LN
6:11 am	NE 103RD AVE & NE 17TH LN
6:13 am	NE 103RD AVE & NE 11TH CT
6:14 am	NE 103RD AVE & NE 106TH CT
6:20 am	70 E & BOX 11600
6:25 am	70 E & NE 71ST AVE
6:35 am	OHS

### 28 OHS AM

<u>TIME</u>	<u>LOCATION</u>
6:11 am	70 E & NE 31ST TER
6:14 am	70 E & NE 56TH AVE
6:16 am	NE 80TH AVE & BOS 1355
6:18 am	NE 80TH AVE & NE 8TH DR
6:24 am	NE 60TH AVE & BOX 109
6:25 am	NE 60TH AVE & NE 4TH LN
6:35 am	OHS

### 42 OHS AM

<u>TIME</u>	<u>LOCATION</u>
6:13 am	SE 40TH AVE & SE 22ND CT
6:15 am	SE 26TH ST & SE 34TH DR
6:17 am	SE 26TH ST & BOX 3716
6:21 am	SE 28TH ST & SE 44TH AVE
6:28 am	SE 4TH AVE & SE 4TH ST
6:40 am	OHS

### 19 OHS AM

<u>TIME</u>	<u>LOCATION</u>
6:14 am	BHR COMMUNITY CENTER
6:20 am	78 W & BOX 8825
6:22 am	78 W & BOX 7650
6:26 am	SW 39TH LN & SW 13TH WAY
6:35 am	OFC (PICK UP SW AREA WALKERS)
6:45 am	OHS

### 31 OHS AM

<u>TIME</u>	<u>LOCATION</u>
6:18 am	NE 62ND AVE & NE 9TH WAY
6:19 am	NE 64TH AVE & NE 10TH LN
6:21 am	NE 64TH AVE & NE 8TH WAY
6:22 am	NE 62ND AVE & NE 5TH ST
6:25 am	70 E & NE 55TH TRL
6:27 am	NE 8TH ST & NE 31ST TER
6:28 am	NE 8TH ST & NE 28TH TER
6:35 am	OHS

### 22 OHS AM

<u>TIME</u>	<u>LOCATION</u>
6:19 am	SE 10TH AVE & JW MOBILE HOME
6:20 am	SE 10TH AVE & SE 6TH ST
6:21 am	SE 13TH AVE & SE 8TH ST
6:23 am	SE 16TH AVE & SE 6TH LN
6:23 am	SE 16TH AVE & SE 4TH ST
6:25 am	NE 17TH AVE & NE 3RD ST
6:30 am	OHS

\*\*\*ROUTE STOPS AND TIMES ARE SUBJECT TO CHANGE\*\*\*



# OKEECHOBEE HIGH SCHOOL

## AM BUS SCHEDULE

### 06 OHS AM

<u>TIME</u>	<u>LOCATION</u>
6:20 am	NW 189TH AVE & NW 83RD TRL
6:38 am	98 N & NW 67TH LN
6:42 am	NW 36TH ST & NW 33RD AVE
6:50 am	OHS

### 18 OHS AM

<u>TIME</u>	<u>LOCATION</u>
6:20 am	70 W & NW 30TH TER
6:21 am	70 W & BOX 3333
6:22 am	NW 1ST ST & BOX 3725
6:23 am	NW 36TH TER & NW 4TH ST
6:27 am	70 W & SW 21ST AVE
6:40 am	OHS

### 32 OHS AM

<u>TIME</u>	<u>LOCATION</u>
6:20 am	NE 64TH AVE & NE 1ST ST
6:21 am	NE 1ST ST & NE 70TH AVE
6:22 am	NE 70TH AVE & NE 5TH ST
6:24 am	NE 70TH AVE & NE 11TH ST
6:29 am	70 E & NE 24TH AVE
6:35 am	OHS

### 40 OHS AM

<u>TIME</u>	<u>LOCATION</u>
6:20 am	NW 80TH AVE & NW 82ND CT
6:21 am	NW 80TH AVE & NW 86TH CT
6:22 am	NW 80TH AVE & NW 90TH CT
6:27 am	98 N & LANIER RANCH
6:31 am	NW 36TH ST & NW 18TH AVE
6:40 am	OHS

### 21 OHS AM

<u>TIME</u>	<u>LOCATION</u>
6:21 am	NE 16TH AVE & NE 8TH ST
6:22 am	NE 14TH AVE & NE 10TH ST
6:23 am	NE 16TH AVE & NE 15TH ST
6:30 am	OHS

### 41 OHS AM

<u>TIME</u>	<u>LOCATION</u>
6:22 am	98 N & BOX 2319
6:25 am	NW 18TH ST & NW 42ND AVE
6:26 am	NW 18TH ST & NW 45TH TER
6:40 am	OHS

\*\*\*ROUTE STOPS AND TIMES ARE SUBJECT TO CHANGE\*\*\*





# OKEECHOBEE HIGH SCHOOL

## AM BUS SCHEDULE

### 39 OHS AM

<u>TIME</u>	<u>LOCATION</u>
6:24 am	NW 36TH ST & NW 28TH AVE
6:25 am	NW 36TH ST & NW 23RD AVE
6:35 am	OHS

### 36 OHS AM

<u>TIME</u>	<u>LOCATION</u>
6:26 am	70 W & BOX 1659
6:27 am	98 N & NW 3RD LN
6:28 am	NW 22ND AVE & NW 4TH ST
6:30 am	NW 26TH AVE & NW 6TH ST
6:31 am	NW 28TH AVE & NW 1ST ST
6:45 am	OHS

### 14 OHS AM

<u>TIME</u>	<u>LOCATION</u>
6:27 am	NW 46TH AVE & BOX 2113
6:28 am	NW 46TH AVE & VILLAS
6:30 am	NW 30TH ST & BOX 4878
6:34 am	NW 30TH ST & NW 74TH TER
6:36 am	NW 30TH ST & BOX 6000
6:40 am	NW 24TH ST & BOX 5820
6:50 am	OHS

### 25 OHS AM

<u>TIME</u>	<u>LOCATION</u>
6:29 am	SW 7TH AVE & SW 19TH ST
6:31 am	SW 3RD AVE & SW 23RD ST
6:34 am	SW 28TH ST & OAK LAKE VILLAS
6:35 am	SW 24TH AVE & SW 33RD CIR
6:38 am	SW 24TH AVE & SW 18TH CT
6:41 am	SW 11TH AVE & SW 9TH ST
6:43 am	SW 11TH AVE & SW 3RD ST
6:55 am	OHS

### 05 OHS AM

<u>TIME</u>	<u>LOCATION</u>
6:31 am	SE 18TH TER & SE 38TH TRL
6:33 am	SE 18TH TER & SE 30TH ST
6:34 am	SE 24TH BLVD & SE 19TH TERR
6:36 am	SE 27TH AVE & SE 25TH DR
6:37 am	SE 27TH AVE & SE 27TH ST
6:41 am	CHARLES HARVEY BLVD & PALM CREEK ENT
6:55 am	OHS

### 15 OHS AM

<u>TIME</u>	<u>LOCATION</u>
6:31 am	NW 6TH ST & NW 2ND AVE
6:34 am	NW 18TH AVE & NW 6TH ST
6:35 am	NW 11TH AVE & NW 5TH ST
6:36 am	NW 10TH AVE & NW 3RD ST
6:50 am	OHS

\*\*\*ROUTE STOPS AND TIMES ARE SUBJECT TO CHANGE\*\*\*



# OKEECHOBEE HIGH SCHOOL

## AM BUS SCHEDULE

### 27 OHS AM

<u>TIME</u>	<u>LOCATION</u>
6:32 am	SE 28TH ST & SE 39TH AVE
6:33 am	SE 28TH ST & SE 37TH AVE
6:35 am	SE 34TH AVE & BOX 3337
6:38 am	441 SE & SE 14TH TER
6:39 am	441 SE & BOX 833
6:43 am	441 S & TOWN CENTER APT
6:55 am	OHS

### 35 OHS AM

<u>TIME</u>	<u>LOCATION</u>
6:37 am	SE 8TH AVE & SE 3RD ST
6:39 am	SE 8TH DR & SE 10TH ST
6:41 am	SE 21ST ST & SE 9TH AVE
6:43 am	SE 9TH AVE & SE 15TH CT
6:47 am	NE 4TH ST & NE 4TH AVE
6:50 am	OHS

## PM BUS SCHEDULE

### 15 OHS PM

<u>TIME</u>	<u>LOCATION</u>
2:00 pm	OHS
2:18 pm	NW 6TH ST & NW 2ND AVE
2:21 pm	NW 10TH AVE & NW 3RD ST
2:22 pm	NW 11TH AVE & NW 5TH ST
2:23 pm	NW 18TH AVE & NW 6TH ST

### 22 OHS PM

<u>TIME</u>	<u>LOCATION</u>
2:00 pm	OHS
2:20 pm	NE 17TH AVE & NE 3RD ST
2:21 pm	SE 16TH AVE & SE 4TH ST
2:22 pm	SE 16TH AVE & SE 6TH LN
2:23 pm	SE 13TH AVE & SE 8TH ST
2:24 pm	SE 10TH AVE & SE 6TH ST
2:25 pm	SE 10TH AVE & JW

### 18 OHS PM

<u>TIME</u>	<u>LOCATION</u>
2:00 pm	OHS
2:21 pm	70 W & NW 30TH TER
2:22 pm	70 W & BOX 3333
2:24 pm	NW 1ST ST & BOX 3725
2:25 pm	NW 36TH TER & NW 4TH ST

### 25 OHS PM

<u>TIME</u>	<u>LOCATION</u>
2:00 pm	OHS
2:20 pm	SW 11TH AVE & SW 3RD ST
2:21 pm	SW 11TH AVE & SW 9TH ST
2:25 pm	SW 24TH AVE & SW 18TH CT
2:27 pm	SW 24TH AVE & SW 33RD CIR
2:29 pm	SW 28TH ST & OAK LAKE VILLAS
2:32 pm	SW 3RD AVE & SW 23RD ST
2:34 pm	SW 7TH AVE & SW 19TH ST

\*\*\*ROUTE STOPS AND TIMES ARE SUBJECT TO CHANGE\*\*\*





# OKEECHOBEE HIGH SCHOOL

## PM BUS SCHEDULE

### 41 OHS PM

<u>TIME</u>	<u>LOCATION</u>
2:00 pm	OHS
2:22 pm	98 N & BOX 2319
2:27 pm	NW 18TH ST & NW 42ND AVE
2:28 pm	NW 18TH ST & NW 45TH TER
2:30 pm	NW 30TH ST & NW 42ND AVE

### 42 OHS PM

<u>TIME</u>	<u>LOCATION</u>
2:00 pm	OHS
2:20 pm	SE 4TH AVE & SE 4TH ST
2:27 pm	SE 40TH AVE & SE 22ND CT
2:29 pm	SE 26TH ST & SE 34TH DR
2:31 pm	SE 26TH ST & BOX 3716
2:35 pm	SE 28TH ST & SE 44TH AVE

### 19 OHS PM

<u>TIME</u>	<u>LOCATION</u>
2:00 pm	OHS
2:19 pm	OFC
2:26 pm	SW 39TH LN & SW 13TH WAY
2:34 pm	BHR COMMUNITY CENTER
2:39 pm	78 W & BOX 8825

### 01 OHS PM

<u>TIME</u>	<u>LOCATION</u>
2:00 pm	OHS
2:26 pm	441 SE & SE 33RD TER
2:26 pm	441 SE & BTWN SE 35TH & 36TH AVE
2:28 pm	441 SE & SE 50TH AVE
2:29 pm	441 SE & BOX 5320
2:32 pm	441 SE & GATOR RV
2:33 pm	441 SE & BOX 7777
2:35 pm	441 SE & BOX 8485
2:38 pm	441 SE & SE 95TH TRL
2:41 pm	441 SE & BOX 11486
2:45 pm	441 SE & DOUGLAS TURNAROUND

### 05 OHS PM

<u>TIME</u>	<u>LOCATION</u>
2:00 pm	OHS
2:24 pm	SE 18TH TER & SE 38TH TRL
2:26 pm	SE 18TH TER & SE 30TH ST
2:27 pm	SE 24TH BLVD & SE 19TH TERR
2:29 pm	SE 27TH AVE & SE 25TH DR
2:30 pm	SE 27TH AVE & SE 27TH ST
2:34 pm	CHARLES HARVEY BLVD & PALM CREEK ENT

### 06 OHS PM

<u>TIME</u>	<u>LOCATION</u>
2:00 pm	OHS
2:20 pm	NW 36TH ST & NW 33RD AVE
2:24 pm	98 N & NW 67TH LN
2:39 pm	NW 189TH AVE & NW 83RD TRL

\*\*\*ROUTE STOPS AND TIMES ARE SUBJECT TO CHANGE\*\*\*



# OKEECHOBEE HIGH SCHOOL

## PM BUS SCHEDULE

### 07 OHS PM

<u>TIME</u>	<u>LOCATION</u>
2:00 pm	OHS
2:23 pm	NE 131ST LN & NE 18TH AVE
2:24 pm	NE 131ST LN & NE 22ND AVE
2:25 pm	NE 131ST LN & NE 26TH AVE
2:36 pm	NE 120TH ST & BOX 7480
2:44 pm	NE 128TH AVE & NE 79TH DR

### 16 OHS PM

<u>TIME</u>	<u>LOCATION</u>
2:00 pm	OHS
2:24 pm	SE 38TH TER & SE 8TH ST
2:25 pm	SE 37TH TER & SE 6TH ST
2:43 pm	SE 132ND AVE & SE 34TH ST
2:45 pm	SE 46TH ST & BOX 12913
2:46 pm	SE 128TH AVE & BOX 4951

### 17 OHS PM

<u>TIME</u>	<u>LOCATION</u>
2:00 pm	OHS
2:27 pm	SE 30TH PKWY & BOX 5945
2:34 pm	SE 57TH DR & SE 89TH TER
2:36 pm	SE 57TH DR & SE 81ST CIR
2:42 pm	SE 57TH DR & SE 93RD TRL
2:43 pm	SE 86TH BLVD & BOX 5957
2:45 pm	SE 87TH TRL & SE 68TH DR

### 21 OHS PM

<u>TIME</u>	<u>LOCATION</u>
2:00 pm	OHS
2:20 pm	NE 16TH AVE & NE 15TH ST
2:21 pm	NE 14TH AVE & NE 10TH ST
2:22 pm	NE 16TH AVE & NE 8TH ST

### 24 OHS PM

<u>TIME</u>	<u>LOCATION</u>
2:00 pm	OHS
2:22 pm	441 N & NE 131ST LN
2:31 pm	NE 224TH ST & LARSON 3
2:32 pm	NE 224TH ST & BOX 4800
2:46 pm	NW 160TH ST & NW 12TH TER
2:49 pm	NW 32ND AVE & NW 168TH CT
2:52 pm	NW 38TH AVE & NW 167TH CT

### 26 OHS PM

<u>TIME</u>	<u>LOCATION</u>
2:00 pm	OHS
2:21 pm	441 N & NE 120TH ST
2:26 pm	441 N & MAC 1 (18000)
2:28 pm	441 N & MAC 3 (207)
2:53 pm	NW 144TH AVE & NW 248TH ST
2:57 pm	NW 144TH AVE & NW 264TH ST
3:00 pm	NW 144TH AVE & NW 280TH ST
3:04 pm	NW 144TH AVE & NW 304TH ST

\*\*\*ROUTE STOPS AND TIMES ARE SUBJECT TO CHANGE\*\*\*





# OKEECHOBEE HIGH SCHOOL

## PM BUS SCHEDULE

### 27 OHS PM

<u>TIME</u>	<u>LOCATION</u>
2:00 pm	OHS
2:26 pm	SE 34TH AVE & BOX 3337
2:28 pm	SE 28TH ST & SE 37TH AVE
2:29 pm	SE 28TH ST & SE 39TH AVE
2:33 pm	441 SE & SE 14TH TER
2:34 pm	441 SE & BOX 833
2:38 pm	441 S & TOWN CENTER APTS. (# 35AM)

### 28 OHS PM

<u>TIME</u>	<u>LOCATION</u>
2:00 pm	OHS
2:22 pm	70 E & NE 31ST TER
2:26 pm	70 E & NE 56TH AVE
2:28 pm	NE 80TH AVE & BOX 1355
2:31 pm	NE 80TH AVE & NE 8TH DR
2:36 pm	NE 60TH AVE & BOX 109
2:37 pm	NE 60TH AVE & NE 4TH LN

### 30 OHS PM

<u>TIME</u>	<u>LOCATION</u>
2:00 pm	OHS
2:28 pm	70 E & BOX 11600
2:32 pm	NE 103RD AVE & NE 23RD LN
2:34 pm	NE 103RD AVE & NE 17TH LN
2:35 pm	NE 103RD AVE & NE 11TH CT
2:36 pm	NE 103RD AVE & NE 106TH CT
2:42 pm	70 E & NE 71ST AVE

### 31 OHS PM

<u>TIME</u>	<u>LOCATION</u>
2:00 pm	OHS
2:24 pm	NE 62ND AVE & NE 9TH WAY
2:25 pm	NE 64TH AVE & NE 10TH LN
2:27 pm	NE 64TH AVE & NE 8TH WAY
2:29 pm	NE 62ND AVE & NE 5TH ST
2:31 pm	70 E & NE 55TH TRL
2:34 pm	NE 8TH ST & NE 31ST TER
2:35 pm	NE 8TH ST & NE 28TH TER

### 32 OHS PM

<u>TIME</u>	<u>LOCATION</u>
2:00 pm	OHS
2:26 pm	NE 64TH AVE & NE 1ST ST
2:27 pm	NE 1ST ST & NE 70TH AVE
2:28 pm	NE 70TH AVE & NE 5TH ST
2:29 pm	NE 70TH AVE & NE 11TH ST

### 33 OHS PM

<u>TIME</u>	<u>LOCATION</u>
2:00 pm	OHS
2:25 pm	441 N & MAC 4 (17000)
2:31 pm	441 N & NE 290TH TRL
2:34 pm	441 N & NW 308TH ST
2:35 pm	441 N & NE 325TH TRL
2:38 pm	NE 342ND TRL & NE 4TH DR
2:42 pm	NW 366TH TRL & BOX 476
2:45 pm	NW 392ND ST & NW 24TH DR
2:53 pm	NW 344TH ST & NW 25TH AVE
3:02 pm	NE 301ST BLVD & BOX 3255
3:10 pm	NE 304TH ST & NE 65TH TER
3:11 pm	NE 304TH ST & NW 69TH TER

\*\*\*ROUTE STOPS AND TIMES ARE SUBJECT TO CHANGE\*\*\*



# OKEECHOBEE HIGH SCHOOL

## PM BUS SCHEDULE

### 39 OHS PM

<u>TIME</u>	<u>LOCATION</u>
2:00 pm	OHS
2:21 pm	NW 36TH ST & NW 23RD AVE
2:22 pm	NW 36TH ST & NW 28TH AVE

### 40 OHS PM

<u>TIME</u>	<u>LOCATION</u>
2:00 pm	OHS
2:20 pm	NW 36TH ST & NW 18TH AVE
2:23 pm	98 N & LANIER RANCH
2:27 pm	NW 80TH AVE & NW 82ND CT
2:28 pm	NW 80TH AVE & NW 86TH CT
2:29 pm	NW 80TH AVE & NW 90TH CT

### 20 OHS PM

<u>TIME</u>	<u>LOCATION</u>
2:00 pm	OHS
2:23 pm	SW 34TH TER & SW 18TH ST
2:24 pm	SW 34TH TER & SW 22ND ST
2:26 pm	SW 16TH ST & SW 40TH DR
2:35 pm	SW 21ST PKWY & SW 69TH TER
2:37 pm	SW 21ST PKWY & BOX 7611
2:47 pm	SW 9TH ST & SW 85TH WAY
2:48 pm	SW 87TH TER & SW 5TH LN
2:50 pm	SW 2ND ST & BOX 8552



\*\*\*ROUTE STOPS AND TIMES ARE SUBJECT TO CHANGE\*\*\*





# CENTRAL ELEMENTARY

## AM BUS SCHEDULE

### 02 CES AM

<u>TIME</u>	<u>LOCATION</u>
7:35 am	NW 6TH ST & NW 3RD AVE
7:37 am	NW 11TH AVE & NW 7TH ST
7:38 am	NW 18TH AVE & NW 5TH ST
7:40 am	NW 10TH AVE & NW 5TH ST
7:41 am	NW 10TH AVE & NW 3RD ST
7:42 am	NW 11TH AVE & NW 3RD ST
7:45 am	CES

### 05 CES AM

<u>TIME</u>	<u>LOCATION</u>
7:22 am	SE 8TH DR & SE 3RD ST
7:22 am	SE 8TH DR & SE 4TH ST
7:27 am	SE 8TH AVE & SE 10TH ST
7:28 am	SE 8TH DR & SE 12TH ST
7:28 am	SE 8TH DR & SE 14TH ST
7:31 am	SE 9TH AVE & SE 21ST ST
7:34 am	SE 9TH AVE & SE 8TH ST
7:35 am	SE 10TH AVE & SE 5TH ST
7:36 am	SE 10TH AVE & J&W
7:38 am	SE 16TH AVE & SE 6TH LN
7:39 am	SE 14TH AVE & SE 8TH ST
7:40 am	SE 13TH AVE & SE 4TH ST
7:44 am	NE 14TH AVE & NE 10TH ST
7:46 am	70 E & RIVER RUN
7:48 am	NE 6TH ST & NE 4TH AVE
7:52 am	CES

### 27 CES AM

<u>TIME</u>	<u>LOCATION</u>
7:33 am	70 W & BOX 1659
7:34 am	NW 28TH AVE & NW 1ST ST
7:35 am	NW 28TH AVE & NW 3RD ST
7:36 am	NW 26TH AVE & NW 5TH ST
7:36 am	NW 26TH AVE & NW 7TH ST
7:38 am	NW 22ND AVE & NW 4TH ST
7:41 am	SW 8TH ST & SW 20TH AVE
7:43 am	SW 8TH ST & SW 13TH AVE
7:45 am	SW 11TH AVE & SW 11TH ST
7:46 am	SW 9TH ST & SW 10TH AVE
7:48 am	SW 11TH AVE & SW 3RD ST
7:50 am	CES

### 41CES AM

<u>TIME</u>	<u>LOCATION</u>
7:35 am	NW 32ND AVE & NW 1ST ST
7:36 am	NW 32ND AVE & NW 3RD ST
7:37 am	NW 4TH ST & NW 34TH TER
7:38 am	NW 36TH TER & NW 6TH ST
7:46 am	SW 3RD AVE & SW 13TH ST
7:48 am	CES

### *School Bus Safety Tips*

- Stand on the sidewalk while waiting for the school bus, staying at least two giant steps away from the curb or road.
- Wait until the bus comes to a complete stop and the driver says it is okay to board before stepping on the bus. Remember to hold the handrail when getting on and off the school bus!



- Never push or shove while getting on the bus or waiting at the bus stop.
- Stay quietly in your seat while riding the bus, and never stick your hands, feet or any part of your body outside of the bus window.
- Never cross the street behind a school bus. Always cross at least 8 steps in front of the bus where the driver can see you.

\*\*\*ROUTE STOPS AND TIMES ARE SUBJECT TO CHANGE\*\*\*



# CENTRAL ELEMENTARY

## PM BUS SCHEDULE

### 02 CES PM

<u>TIME</u>	<u>LOCATION</u>
2:50 pm	CES
2:58 pm	NW 6TH ST & NW 3RD AVE
3:01 pm	NW 11TH AVE & NW 3RD ST
3:01 pm	NW 10TH AVE & NW 3RD ST
3:03 pm	NW 10TH AVE & NW 5TH ST
3:04 pm	NW 11TH AVE & NW 7TH ST
3:06 pm	NW 18TH AVE & NW 5TH ST

### 05 CES PM

<u>TIME</u>	<u>LOCATION</u>
2:50 pm	CES
2:56 pm	SE 8TH DR & SE 3RD ST
2:57 pm	SE 8TH DR & SE 4TH ST
3:02 pm	SE 8TH AVE & SE 10TH ST
3:03 pm	SE 8TH DR & SE 12TH ST
3:04 pm	SE 8TH DR & SE 14TH ST
3:06 pm	SE 9TH AVE & SE 21ST ST
3:10 pm	SE 9TH AVE & SE 8TH ST
3:11 pm	SE 10TH AVE & SE 5TH ST
3:11 pm	SE 10TH AVE & JW
3:14 pm	SE 16TH AVE & SE 6TH LN
3:15 pm	SE 14TH AVE & SE 8TH ST
3:16 pm	SE 13TH AVE & SE 4TH ST
3:19 pm	NE 14TH AVE & NE 10TH ST
3:22 pm	70 E & RIVER RUN
3:23 pm	NE 6TH ST & NE 4TH AVE

### 27 CES PM

<u>TIME</u>	<u>LOCATION</u>
2:50 pm	CES
2:57 pm	70 W & BOX 1659
2:58 pm	NW 28TH AVE & NW 1ST ST
2:59 pm	NW 28TH AVE & NW 3RD ST
3:00 pm	NW 26TH AVE & NW 5TH ST
3:00 pm	NW 26TH AVE & NW 7TH ST
3:02 pm	NW 22ND AVE & NW 4TH ST
3:05 pm	SW 8TH ST & SW 20TH AVE
3:05 pm	SW 8TH ST & SW 13TH AVE
3:07 pm	SW 11TH AVE & SW 3RD ST
3:09 pm	SW 10TH AVE & SW 9TH ST
3:10 pm	SW 11TH AVE & SW 11TH ST

### 41CES PM

<u>TIME</u>	<u>LOCATION</u>
2:50 pm	CES
2:57 pm	SW 3RD AVE & SW 13TH ST
3:01 pm	NW 32ND AVE & NW 1ST ST
3:02 pm	NW 32ND AVE & NW 3RD ST
3:03 pm	NW 4TH ST & NW 34TH TER
3:04 pm	NW 36TH TER & NW 6TH ST



\*\*\*ROUTE STOPS AND TIMES ARE SUBJECT TO CHANGE\*\*\*





# EVERGLADES ELEMENTARY

## AM BUS SCHEDULE

### 34 EES AM

<u>TIME</u>	<u>LOCATION</u>
7:10 am	NE 103RD AVE & NE 23RD LN
7:11 am	NE 103RD AVE & NE 19TH ST
7:13 am	NE 103RD AVE & NE 11TH CT
7:14 am	NE 103RD AVE & NE 106TH CT
7:15 am	NE 104TH CT & BOX 896
7:18 am	NE 112TH AVE & NE 32ND ST
7:24 am	NE 128TH AVE & NE 79TH DR
7:30 am	NE 128TH AVE & 25TH ST
7:32 am	NE 128TH AVE & NE 20TH CT
7:34 am	NE 128TH AVE & BOX 1111
7:38 am	SE 34TH ST & SE 132ND AVE
7:40 am	SE 128TH AVE & BOX 4340
7:42 am	SE 46TH ST & BOX 13660
7:44 am	SE 128TH AVE & BOX 4351
8:00 am	EES

### 42 EES AM

<u>TIME</u>	<u>LOCATION</u>
7:21 am	70 E & NE 31ST TER
7:24 am	70 E & NE 56TH AVE
7:28 am	NE 96TH AVE & BOX 2396
7:33 am	NE 80TH AVE & NE 37TH ST
7:38 am	70 E & NE 55TH TRL
7:40 am	NE 48TH AVE & BOX 1392
7:42 am	NE 10TH LN & NE 48TH AVE
7:45 am	EES

### 07 EES AM

<u>TIME</u>	<u>LOCATION</u>
7:23 am	441 SE & BOX 5350
7:26 am	441 SE & BOX 6542
7:27 am	441 SE & BOX 8741
7:28 am	SE 68TH WAY & BOX 8769
7:29 am	SE 67TH DR & SE 88TH TR
7:31 am	SE 86TH BLVD & BOX 6504
7:32 am	SE 86TH BLVD & SE 58TH DR
7:33 am	SE 57TH DR & SE 93RD TRL
7:35 am	SE 60TH DR & BOX 9338
7:37 am	SE 57TH DR & SE 89TH TER
7:39 am	SE 59TH DR & SE 85TH TER
7:49 am	EES

### 32 EES AM

<u>TIME</u>	<u>LOCATION</u>
7:30 am	NE 60TH AVE & NE 8TH ST
7:31 am	NE 60TH AVE & NE 3RD LN
7:34 am	SE 8TH ST & BOX 6631
7:39 am	NE 80TH AVE & NE 8TH DR
7:41 am	NE 82ND AVE & NE 12TH LN
7:43 am	70 E & NE 71ST AVE
7:44 am	70 E & NE 64TH AVE
7:49 am	EES

### 17 EES AM

<u>TIME</u>	<u>LOCATION</u>
7:32 am	14151 441 SE
7:35 am	441 SE & BOX 12963
7:36 am	441 SE & SE 118TH TER
7:37 am	441 SE & BOX 11486
7:39 am	441 SE TO 10366
7:42 am	441 SE & BOX 8485
7:43 am	441 SE & BOX 7777
7:44 am	441 SE & BOX 6500
7:47 am	441 SE & SE 50TH AVE
7:49 am	441 SE & 42ND PL
7:50 am	441 SE & TREASURE ISLAND MOTEL
7:51 am	SE 34TH AVE & BOX 3332
7:53 am	SE 28TH ST & SE 36TH AVE
7:54 am	SE 28TH ST & SE 38TH AVE
8:00 am	EES

### 01 EES AM

<u>TIME</u>	<u>LOCATION</u>
7:38 am	NE 30TH AVE & NE 7TH LN
7:40 am	NE 28TH AVE & BOX 1073
7:40 am	NE 30TH AVE & NE 11TH LN
7:42 am	NE 8TH ST & NE 31ST TER
7:45 am	EES

\*\*\*ROUTE STOPS AND TIMES ARE SUBJECT TO CHANGE\*\*\*



# EVERGLADES ELEMENTARY

## AM BUS SCHEDULE

## PM BUS SCHEDULE

### 25 EES AM

<u>TIME</u>	<u>LOCATION</u>
7:36 am	441 SE & SE 33RD TER
7:38 am	SE 38TH AVE & BOX 3321
7:39 am	SE 39TH AVE & BOX 3031
7:40 am	SE 39TH AVE & SE 29TH CT
7:41 am	SE 28TH ST & BOX 4031
7:42 am	SE 30TH ST & BOX 4514
7:43 am	SE 28TH ST & SE 47TH TER
7:45 am	SE 43RD AVE & SE 27TH ST
7:46 am	SE 26TH ST & BOX 4046
7:47 am	SE 26TH ST & BOX 3536
7:50 am	SE 34TH DR & SE 20TH CT
7:50 am	SE 34TH DR & SE 23RD ST
7:51 am	SE 34TH DR & SE 25TH ST
7:52 am	SE 25TH ST & BOX 3821
7:54 am	SE 40TH AVE & SE 22ND CT
7:57 am	EES

### 28 EES AM

<u>TIME</u>	<u>LOCATION</u>
7:37 am	NE 62ND AVE & NE 4TH ST
7:40 am	NE 62ND AVE & NE 7TH ST
7:40 am	NE 62ND AVE & BOX 895
7:43 am	NE 1ST ST & BOX 6668
7:44 am	NE 1ST ST & NE 70TH AVE
7:45 am	NE 70TH AVE & NE 4TH ST
7:46 am	NE 70TH AVE & NE 7TH ST
7:47 am	NE 70TH AVE & NE 11TH ST
7:53 am	EES

### 25 EES PM

<u>TIME</u>	<u>LOCATION</u>
2:50 pm	EES
2:58 pm	SE 40TH AVE & SE 22ND CT
2:59 pm	SE 25TH ST & BOX 3821
3:02 pm	SE 34TH DR & SE 20TH CT
3:03 pm	SE 34TH DR & SE 23RD ST
3:04 pm	SE 34TH DR & SE 25TH ST
3:05 pm	SE 26TH ST & BOX 3536
3:06 pm	SE 26TH ST & BOX 4046
3:07 pm	SE 43RD AVE & SE 27TH ST
3:08 pm	SE 28TH ST & SE 47TH TER
3:10 pm	SE 39TH AVE & SE 29TH CT
3:11 pm	SE 39TH AVE & BOX 3031
3:12 pm	SE 38TH AVE & BOX 3321
3:14 pm	441 SE & SE 33RD TER

### 31 EES AM

<u>TIME</u>	<u>LOCATION</u>
7:43 am	NE 8TH ST & NE 29TH AVE
7:44 am	70 E & NE 24TH AVE
7:47 am	NE 16TH AVE & NE 8TH ST
7:48 am	NE 16TH AVE & NE 14TH ST
7:53 am	EES

### 30 EES AM

<u>TIME</u>	<u>LOCATION</u>
7:49 am	NE 64TH AVE & NE 2ND ST
7:50 am	NE 64TH AVE & NE 4TH ST
7:51 am	NE 64TH AVE & NE 7TH ST
7:51 am	NE 64TH AVE & NE 9TH LN
7:52 am	NE 64TH AVE & NE 11TH ST
7:57 am	EES

### 28 EES PM

<u>TIME</u>	<u>LOCATION</u>
2:50 pm	EES
3:00 pm	NE 62ND AVE & NE 4TH ST
3:03 pm	NE 62ND AVE & NE 7TH ST
3:04 pm	NE 62ND AVE & BOX 895
3:06 pm	NE 1ST ST & BOX 6668
3:07 pm	NE 1ST ST & NE 70TH AVE
3:08 pm	NE 70TH AVE & NE 4TH ST
3:09 pm	NE 70TH AVE & NE 7TH ST
3:10 pm	NE 70TH AVE & NE 11TH ST

\*\*\*ROUTE STOPS AND TIMES ARE SUBJECT TO CHANGE\*\*\*





# EVERGLADES ELEMENTARY

## PM BUS SCHEDULE

### 31 EES PM

<u>TIME</u>	<u>LOCATION</u>
2:50 pm	EES
2:59 pm	NE 8TH ST & NE 29TH AVE
3:00 pm	70 E & NE 24TH AVE
3:04 pm	NE 16TH AVE & NE 8TH ST
3:05 pm	NE 16TH AVE & NE 14TH ST

### 32 EES PM

<u>TIME</u>	<u>LOCATION</u>
2:50 pm	EES
3:00 pm	NE 60TH AVE & NE 8TH ST
3:01 pm	NE 60TH AVE & NE 3RD LN
3:04 pm	SE 8TH ST & BOX 6631
3:10 pm	NE 80TH AVE & NE 8TH DR
3:11 pm	NE 82ND AVE & NE 12TH LN
3:13 pm	70 E & NE 71ST AVE
3:15 pm	70 E & NE 64TH AVE

### 17 EES PM

<u>TIME</u>	<u>LOCATION</u>
2:55 pm	EES
3:06 pm	SE 28TH ST & BOX 4031
3:06 pm	SE 28TH ST & SE 38TH AVE
3:07 pm	SE 28TH ST & SE 36TH AVE
3:09 pm	SE 34TH AVE & BOX 3332
3:10 pm	441 SE & TREASURE ISLAND MOTEL
3:11 pm	441 SE & 42ND PL
3:12 pm	441 SE & SE 50TH AVE
3:15 pm	441 SE & BOX 6500
3:16 pm	441 SE & BOX 7777
3:17 pm	441 SE & BOX 8485
3:20 pm	441 SE & BOX 10366
3:21 pm	441 SE & BOX 11486
3:22 pm	441 SE & SE 118TH TRL
3:24 pm	441 SE & BOX 12963
3:26 pm	14151 441 SE

### 30 EES PM

<u>TIME</u>	<u>LOCATION</u>
2:55 pm	EES
3:05 pm	NE 64TH AVE & NE 11TH ST
3:06 pm	NE 64TH AVE & NE 9TH LN
3:07 pm	NE 64TH AVE & NE 7TH ST
3:08 pm	NE 64TH AVE & NE 4TH ST
3:09 pm	NE 64TH AVE & NE 2ND ST

### 42 EES PM

<u>TIME</u>	<u>LOCATION</u>
2:55 pm	EES
3:03 pm	70 E & NE 31ST TER
3:06 pm	70 E & NE 56TH AVE
3:10 pm	NE 96TH AVE & BOX 2396
3:15 pm	NE 80TH AVE & NE 37TH ST
3:19 pm	70 E & NE 55TH TRL

### 01 EES PM

<u>TIME</u>	<u>LOCATION</u>
3:00 pm	EES
3:08 pm	NE 30TH AVE & NE 7TH LN
3:09 pm	NE 8TH ST & NE 31ST TER
3:10 pm	NE 11TH LN & NE 30TH AVE
3:11 pm	NE 28TH AVE & BOX 1073

\*\*\*ROUTE STOPS AND TIMES ARE SUBJECT TO CHANGE\*\*\*



# EVERGLADES ELEMENTARY

## PM BUS SCHEDULE

### 07 EES PM

<u>TIME</u>	<u>LOCATION</u>
3:00 pm	EES
3:15 pm	441 SE & BOX 5350
3:17 pm	441 SE & BOX 6542
3:19 pm	441 SE & BOX 8741
3:20 pm	SE 68TH WAY & BOX 8769
3:21 pm	SE 67TH DR & SE 88TH TRL
3:22 pm	SE 86TH BLVD & BOX 6504
3:24 pm	SE 86TH BLVD & SE 58TH DR
3:25 pm	SE 57TH DR & SE 93RD TRL
3:26 pm	SE 60TH DR & BOX 9338
3:29 pm	SE 57TH DR & SE 89TH TER
3:31 pm	SE 59TH DR & SE 85TH TER

### 34 EES PM

<u>TIME</u>	<u>LOCATION</u>
3:00 pm	EES
3:14 pm	NE 103RD AVE & NE 23RD LN
3:15 pm	NE 103RD AVE & NE 19TH ST
3:17 pm	NE 103RD AVE & NE 11TH CT
3:18 pm	NE 103RD AVE & NE 106TH CT
3:19 pm	NE 104TH CT & BOX 896
3:23 pm	NE 112TH AVE & NE 32ND ST
3:29 pm	NE 128TH AVE & NE 79TH DR
3:35 pm	NE 128TH AVE & 25TH ST
3:36 pm	NE 128TH AVE & NE 20TH CT
3:38 pm	NE 128TH AVE & BOX 1111
3:43 pm	SE 34TH ST & SE 132ND AVE
3:45 pm	SE 128TH AVE & BOX 4340
3:47 pm	SE 46TH ST & BOX 13660
3:49 pm	SE 128TH AVE & BOX 4351

## School Lunch Info

The Child Nutrition Department of Okeechobee County Schools is pleased to inform the public that we will be continuing with the USDA federal program for Breakfast and Lunch called Community Eligibility Provision (CEP) for this

coming school year 2020-21. All of our schools will be participating and will provide healthy breakfast and lunch meals each day at no charge to all students. Current Student debt will not be erased; however, students will not incur future debt for their breakfast and lunch meals. Students and adults will still be allowed to carry accounts with their cafeteria for ala carte and snack purchases. Adult breakfast price is \$2.50 and adult lunch will be \$4.00.



*if your child is registered for Option 2 (Okeechobee Sync), online distance learning, he/she is eligible to receive breakfast and lunch from the School District. Beginning August 17<sup>th</sup>, there will be a daily pickup distribution site set up in the parking lot of our public Library, 206 SW 16th St, Okeechobee, FL 34974, Monday - Friday from 11:30 - 1:00. For clarification purposes, only Option 2 is eligible for pickup meals.*

*Option 3 (Florida Virtual School) students are not eligible for meals. All pickup meals will be verified.*

*If you have any questions, please contact Lisa R. Bell, Food Service Supervisor @ 863-462-5148 x 1214*

\*\*\*ROUTE STOPS AND TIMES ARE SUBJECT TO CHANGE\*\*\*

# Yearling Middle School

## Welcome Back to the YMS Community

Dear YMS Community,

I am writing to welcome our students, staff, families and community to the 2020-2021 school year. The last time we actually saw one another, it was March. These are unprecedented times in our country and for so many extremely hard times. My thoughts have been with our YMS families and students since we said goodbye for Spring Break, hoping all students and loved ones were safe, healthy, and doing well. I know I speak for our entire staff when I say that we have missed seeing our students dearly and very much look forward to reuniting soon.

This school year will bring many new challenges due to the Covid-19 pandemic, but I want to assure all of our families that we have developed a campus plan designed to maintain safety for all of our students and staff. We have followed all CDC and Florida Department of Education guidelines and have incorporated our

Okeechobee County School District's back-to-school plan on our campus and adjusted our protocols to provide the safest environment possible.

Academically, we look forward to challenging our students to close any learning gaps that might have developed over the past several months and to resume our pursuit of our school's vision: Yearling Middle School will prepare ALL students for success in college, career, and life. Our staff has been working diligently in collaborative learning teams to prepare unit plans, identify the most important standards, and to become experts in identifying instructional strategies that will help us to meet the needs of ALL YMS students.

In addition, we begin the new school year celebrating YMS math teacher Krista Stanley being named Florida's teacher of the year. Mrs. Stanley's rare level of success provides the blueprint for all YMS teachers to follow as we work to



**David Krakoff**

differentiate instruction and customize education to serve ALL students based on what they need.

Whether our students are beginning the year online or with us at YMS, we will work to guide all of our students toward content mastery and continued growth socially and emotionally. We can't wait to see you!

Yours in Education,  
David Krakoff



## Yearling Middle School

Where we are achieving excellence by acting responsibly, making good choices and striving for success!

Mr. David Krakoff, Principal   Mr. Jerrime Shells, Asst. Principal   Mr. Walt Caves, Dean

### OPTION

Continued From Page 19

Okeechobee Virtual School. There will be a two week drop period at the beginning of each semester, if a student finds the need to move to another option. Families should have these components if registering for Okeechobee Virtual School:

- ♦ Elementary students must have

a committed adult coach (parent) to work daily with the student

- ♦ Strong in-home internet connection
- ♦ A reliable device or a district Chromebook which is available to be checked out from the school or district
- ♦ Access to a printer or scanner, headphones and traditional school supplies
- ♦ A separate workspace in the

home

To be successful in a virtual school environment students should have strong skills in:

- ♦ Time management and self-pacing.
- ♦ Ability and willingness to learn independently.
- ♦ Self-reflection to understand progress reports.

See **OPTION**— Page 45





# NORTH ELEMENTARY

## AM BUS SCHEDULE

### 08 NES AM

<u>TIME</u>	<u>LOCATION</u>
6:42 am	300TH ST & NW CENTER AVE
6:47 am	NE 9TH AVE & END OF ROAD
6:54 am	NW 392ND ST & NW 24TH DR
7:00 am	NW 352ND CT & NW 4TH DR
7:04 am	NE 342ND TRL & NE 4TH DR
7:06 am	NE 342ND TRL & NE 356TH CT
7:08 am	NE 342ND TRL & NE 361ST CT
7:11 am	NW 366TH TRL & BOX 476
7:16 am	NW 344TH ST & NW 29TH AVE
7:23 am	NE 304TH ST & NE 23RD WAY
7:27 am	NE 304TH ST & NE 55TH AVE
7:30 am	NE 304TH ST & NE 65TH TER
7:36 am	NE 48TH AVE & NE 272ND ST
7:42 am	NE 224TH ST & LARSON 3
7:49 am	NE 168TH ST & FIRE HOUSE
8:00 am	NES

### 21 NES AM

<u>TIME</u>	<u>LOCATION</u>
6:58 am	NW 144TH DR & NW 9TH AVE
7:08 am	NW 160TH AVE & BOX 3253
7:09 am	NW 160TH ST & BOX 3631
7:09 am	NW 38TH AVE & NW 163RD CT
7:11 am	NW 38TH AVE & NW 167TH CT
7:13 am	NW 38TH AVE & BOX 17840
7:22 am	NW 32ND AVE & NW 175TH CT
7:23 am	NW 32ND AVE & NW 172ND CT
7:24 am	NW 32ND AVE & NW 168TH CT
7:31 am	NE 160TH ST & NE 1ST WAY
7:41 am	NW 30TH LN & BOX
7:45 am	NES

### 24 NES AM

<u>TIME</u>	<u>LOCATION</u>
7:21 am	441 N & NE 120TH ST
7:26 am	441 N & MAC 1 (18000)
7:28 am	441 N & MAC 3 (207)
7:29 am	441 N & MAC 2 (208)
7:31 am	441 N & MAC 4 (17000)
7:35 am	441 N & NE 131ST LN
7:40 am	441 N & OYDC
7:45 am	NES

### 14 NES AM

<u>TIME</u>	<u>LOCATION</u>
7:14 am	441 N & NE 11TH ST
7:22 am	NE 54TH TRL & BOX 2600
7:32 am	NW 36TH ST & NW 4TH AVE
7:33 am	NW 36TH ST & NW 8TH AVE
7:34 am	NW 36TH ST & BOX 1319
7:35 am	NW 39TH CIR & BOX 1408
7:36 am	NW 39TH CIR & BOX 938
7:43 am	NW 21ST LN & NW 5TH AVE
7:43 am	NW 17TH ST & NW 5TH AVE
7:44 am	NW 15TH ST & BOX 509
7:45 am	NW 7TH AVE & BOX 1712
7:46 am	NW 7TH AVE & NW 20TH LN

### 10 NES AM

<u>TIME</u>	<u>LOCATION</u>
7:32 am	NW 2ND TER & BOX 11378
7:35 am	NE 110TH ST & NE 1ST WAY
7:36 am	NW 110TH ST & NW 8TH AVE
7:37 am	NW 106TH ST & NW 8TH AVE
7:39 am	NE 102ND ST & CENTER AVE
7:41 am	NW 102ND ST & NW 8TH AVE
7:47 am	NW 34TH ST & NW 4TH AVE
7:48 am	NW 34TH ST & NW 6TH AVE
7:50 am	NES

### 39 NES AM

<u>TIME</u>	<u>LOCATION</u>
7:37 am	NE 144TH ST & BOX 2050
7:39 am	NE 138TH ST & NE 22ND AVE
7:41 am	NE 26TH AVE & NE 131ST LN
7:42 am	NE 131ST LN & NE 22ND AVE
7:43 am	NE 131ST LN & NE 18TH AVE
7:52 am	NW 36TH ST & NW 10TH AVE
7:53 am	NW 12TH AVE & NW 35TH LN
7:55 am	NES

\*\*\*ROUTE STOPS AND TIMES ARE SUBJECT TO CHANGE\*\*\*



# NORTH ELEMENTARY

## PM BUS SCHEDULE

### 21 NES PM

<u>TIME</u>	<u>LOCATION</u>
2:50 pm	NES
3:06 pm	NE 160TH ST & NE 1ST WAY
3:14 pm	NW 32ND AVE & NW 175TH CT
3:15 pm	NW 32ND AVE & NW 172ND CT
3:19 pm	NW 160TH AVE & BOX 3253
3:19 pm	NW 160TH ST & BOX 3631
3:20 pm	NW 38TH AVE & NW 163RD CT
3:22 pm	NW 38TH AVE & NW 167TH CT
3:25 pm	NW 38TH AVE & BOX 17840
3:37 pm	NW 144TH DR & NW 9TH AVE

### 24 NES PM

<u>TIME</u>	<u>LOCATION</u>
2:50 pm	NES
2:59 pm	OYDC
3:03 pm	441 N & NE 120TH ST
3:08 pm	441 N & MAC 1 (18000)
3:10 pm	441 N & MAC 3 (207)
3:10 pm	441 N & MAC 2 (208)
3:14 pm	441 N & MAC 4 (17000)
3:18 pm	441 N & NE 131ST LN

### 10 NES PM

<u>TIME</u>	<u>LOCATION</u>
2:55 pm	NES
3:02 pm	NW 34TH ST & NW 6TH AVE
3:02 pm	NW 34TH ST & NW 4TH AVE
3:09 pm	NW 2ND TER & BOX 11378
3:12 pm	NE 110TH ST & NE 1ST WAY
3:14 pm	NW 110TH ST & NW 8TH AVE
3:15 pm	NW 106TH ST & NW 8TH AVE
3:17 pm	NE 102ND ST & CENTER AVE
3:19 pm	NW 102ND ST & NW 8TH AVE

### 14 NES PM

<u>TIME</u>	<u>LOCATION</u>
2:55 pm	NES
3:02 pm	NW 36TH ST & NW 8TH AVE
3:05 pm	NW 36TH ST & BOX 1319
3:06 pm	NW 39TH CIR & BOX 1408
3:07 pm	NW 39TH CIR & BOX 938
3:08 pm	NW 36TH ST & NW 4TH AVE
3:16 pm	NE 54TH TRL & BOX 2600
3:25 pm	NW 30TH LN & BOX 581
3:28 pm	NW 21ST LN & NW 5TH AVE
3:29 pm	NW 17TH ST & NW 5TH AVE
3:30 pm	NW 15TH ST & BOX 509
3:30 pm	NW 7TH AVE & BOX 1712
3:32 pm	NW 7TH AVE & NW 20TH LN
3:34 pm	NW 12TH ST & BOX 202
3:35 pm	NW 10TH ST & NW 3RD AVE
3:36 pm	NW 9TH ST & BOX 420
3:37 pm	NW 9TH AVE & NW 11TH ST
3:42 pm	441 N & NE 11TH ST

### 39 NES PM

<u>TIME</u>	<u>LOCATION</u>
2:55 pm	NES
2:57 pm	NW 12TH AVE & NW 35TH LN
2:58 pm	NW 36TH ST & NW 10TH AVE
3:06 pm	NE 131ST LN & NE 18TH AVE
3:07 pm	NE 131ST LN & NE 22ND AVE
3:08 pm	NE 131ST LN & NE 26TH AVE
3:11 pm	NE 138TH ST & NE 22ND AVE
3:12 pm	NE 144TH ST & BOX 2050

### 08 NES PM

<u>TIME</u>	<u>LOCATION</u>
3:00 pm	NES
3:16 pm	NE 168TH ST & FIRE STATION
3:22 pm	NE 224TH ST & LARSON 3
3:28 pm	NE 48TH AVE & NE 272ND ST
3:31 pm	NE 304TH ST & NE 55TH AVE
3:34 pm	NE 304TH ST & NE 65TH TER
3:41 pm	NE 304TH ST & NE 23RD WAY
3:45 pm	NE 9TH AVE & END OF ROAD
3:48 pm	NE 342ND TRL & NE 4TH DR
3:51 pm	NE 342ND TRL & NE 356TH CT
3:53 pm	NE 361ST CT & NE 10TH DR
3:55 pm	NE 342ND TRL & NE 361ST CT
3:59 pm	NW 366TH TRL & BOX 476
4:02 pm	NW 352ND CT & NW 4TH DR
4:07 pm	NW 392ND ST & NW 24TH DR
4:15 pm	NW 344TH ST & NW 29TH AVE
4:22 pm	300TH ST & NW CENTER AVE

\*\*\*ROUTE STOPS AND TIMES ARE SUBJECT TO CHANGE\*\*\*



# SEMINOLE ELEMENTARY

## AM BUS SCHEDULE

### 38 SEM AM

<u>TIME</u>	<u>LOCATION</u>
6:39 am	NW 192ND AVE & NW 320TH ST
6:42 am	NW 192ND AVE & NW 302ND ST
6:45 am	NW 192ND AVE & NW 288TH ST
7:05 am	NW 240TH ST & BOX 12600
7:16 am	NW 144TH AVE & NW 288TH ST
7:19 am	NW 144TH AVE & NW 272ND ST
7:22 am	NW 144TH AVE & NW 256TH ST
7:24 am	NW 144TH AVE & NW 248TH ST
7:25 am	NW 144TH AVE & 100' BEFORE NW 240TH ST
7:36 am	NW 176TH AVE & NW 203RD ST
7:55 am	SEM

### 22 SEM AM

<u>TIME</u>	<u>LOCATION</u>
6:53 am	NW 160TH DR & NW 214TH CIR
7:12 am	NW 189TH AVE & NW 83RD TRL
7:22 am	NW 144TH TRL & BOX 12900
7:28 am	98 N & BISHOP DAIRY
7:29 am	98 N & NW 120TH ST
7:33 am	NW 80TH AVE & NW 82ND CT
7:34 am	NW 80TH AVE & NW 86TH CT
7:36 am	NW 80TH AVE & NW 92ND CT
7:37 am	NW 80TH AVE & NW 96TH CT
7:40 am	98 N & NW 67TH LN
7:43 am	98 N & MILKING R
7:47 am	NW 46TH AVE & VILLAS
7:50 am	SEM

### 12 SEM AM

<u>TIME</u>	<u>LOCATION</u>
6:54 am	BRINKERHOFF LN & KELTON TER
6:55 am	BROADLAND LN & JORDAN TER
6:59 am	SW RUCKS DAIRY RD & BOX 2527
7:05 am	70 W & SW 128TH AVE
7:10 am	NW 128TH AVE & BOX 3300
7:23 am	NW 56TH ST & NW 54TH ST
7:44 am	NW 18TH ST & NW 36TH TER
7:45 am	NW 18TH ST & NW 38TH AVE
7:50 am	SEM

### 15 SEM AM

<u>TIME</u>	<u>LOCATION</u>
7:20 am	NW 18TH ST & 50' BEFORE NW 46TH AVE
7:24 am	NW 24TH ST & NW 53RD TER
7:27 am	NW 24TH ST & NW 63RD TER
7:30 am	NW 30TH ST & BOX 5277
7:31 am	NW 30TH ST & BOX 5853
7:34 am	NW 30TH ST & NW 74TH TER
7:38 am	NW 30TH ST & NW 47TH AVE
7:40 am	SEM

### 06 SEM AM

<u>TIME</u>	<u>LOCATION</u>
7:21 am	NW 10TH AVE & NW 10TH ST
7:27 am	NW 24TH LN & NW 34TH AVE
7:29 am	NW 35TH DR & NW 37TH AVE
7:31 am	NW 36TH ST & NW 38TH AVE
7:35 am	NW 18TH ST & NW 42ND AVE
7:40 am	SEM

### 40 SEM AM

<u>TIME</u>	<u>LOCATION</u>
7:39 am	NW 36TH ST & NW 18TH AVE
7:41 am	NW 36TH ST & NW 23RD AVE
7:42 am	NW 36TH ST & NW 28TH AVE
7:43 am	NW 36TH ST & NW 33RD AVE
7:44 am	NW 36TH ST & NW 40TH DR
7:45 am	SEM

\*\*\*ROUTE STOPS AND TIMES ARE SUBJECT TO CHANGE\*\*\*





# SEMINOLE ELEMENTARY

## PM BUS SCHEDULE

### 06 SEM PM

<u>TIME</u>	<u>LOCATION</u>
3:20 pm	SEM
3:29 pm	NW 18TH ST & NW 42ND AVE
3:35 pm	NW 36TH ST & NW 38TH AVE
3:36 pm	35TH DR & NW 37TH AVE
3:38 pm	NW 24TH LN & NW 34TH AVE
3:44 pm	NW 10TH AVE & NW 10TH ST

### 15 SEM PM

<u>TIME</u>	<u>LOCATION</u>
3:20 pm	SEM
3:30 pm	NW 18TH ST & 50' BEFORE NW 46TH AVE
3:33 pm	NW 30TH ST & NW 47TH AVE
3:35 pm	NW 24TH ST & NW 53RD TER
3:37 pm	NW 24TH ST & NW 63RD TER
3:41 pm	NW 30TH ST & BOX 5277
3:42 pm	NW 30TH ST & BOX 5853
3:45 pm	NW 30TH ST & NW 74TH TER

### 40 SEM PM

<u>TIME</u>	<u>LOCATION</u>
3:20 pm	SEM
3:22 pm	NW 36TH ST & NW 40TH DR
3:23 pm	NW 36TH ST & NW 33RD AVE
3:24 pm	NW 36TH ST & NW 28TH AVE
3:25 pm	NW 36TH ST & NW 23RD AVE
3:26 pm	NW 36TH ST & NW 18TH AVE

### 12 SEM PM

<u>TIME</u>	<u>LOCATION</u>
3:25 pm	SEM
3:34 pm	NW 18TH ST & NW 38TH AVE
3:36 pm	NW 18TH ST & NW 36TH TER
3:50 pm	NW 128TH AVE & BOX 3300
4:03 pm	NW 56TH ST & NW 54TH ST
4:12 pm	70 W & NW 128TH AVE
4:15 pm	BRINKERHOFF LN & KELTON TER
4:17 pm	BROADLAND LN & JORDAN TER
4:21 pm	SW RUCKS DAIRY RD & BOX 2527

### 22 SEM PM

<u>TIME</u>	<u>LOCATION</u>
3:25 pm	SEM
3:33 pm	NW 46TH AVE & VILLAS
3:38 pm	98 N & MILKING R
3:40 pm	98 N & NW 67TH LN
3:42 pm	NW 80TH AVE & NW 82ND CT
3:43 pm	NW 80TH AVE & NW 86TH CT
3:44 pm	NW 80TH AVE & NW 92ND CT
3:45 pm	NW 80TH AVE & NW 96TH CT
3:52 pm	98 N & BISHOP DAIRY
4:01 pm	NW 189TH AVE & 83RD TRL
4:11 pm	NW 144TH TRL & BOX 12900
4:19 pm	NW 160TH DR & NW 214TH CIR

### 38 SEM PM

<u>TIME</u>	<u>LOCATION</u>
3:25 pm	SEM
3:50 pm	NW 176TH AVE & NW 203RD ST
4:03 pm	NW 240TH ST & BOX 12600
4:05 pm	NW 144TH AVE & BEFORE NW 240TH ST
4:07 pm	NW 144TH AVE & NW 248TH ST
4:08 pm	NW 144TH AVE & NW 256TH ST
4:11 pm	NW 144TH AVE & NW 272ND ST
4:13 pm	NW 144TH AVE & NW 288TH ST
4:39 pm	NW 192ND AVE & NW 288TH ST
4:42 pm	NW 192ND AVE & NW 302ND ST
4:44 pm	NW 192ND AVE & NW 320TH ST

\*\*\*ROUTE STOPS AND TIMES ARE SUBJECT TO CHANGE\*\*\*



# SOUTH ELEMENTARY

## AM BUS SCHEDULE

### 19 SES AM

<u>TIME</u>	<u>LOCATION</u>
7:11 am	SW 53RD ST & BOX 1952
7:14 am	78 W & BOX 7655
7:22 am	BHR COMMUNITY CENTER
7:36 am	SW 39TH LN & SW 13TH TERR
7:38 am	SW 16TH AVE & BOX 3806
7:42 am	SW 28TH ST & OAK LAKE APTS
7:45 am	SES

### 18 SES AM

<u>TIME</u>	<u>LOCATION</u>
7:20 am	SW 85TH WAY & SW 10TH LN
7:21 am	SW 86TH AVE & SW 14TH LN
7:22 am	SW 14TH LN & SW 83RD AVE
7:25 am	SW 87TH TER & SW 5TH LN
7:28 am	SW 85TH AVE & BOX 300
7:30 am	SW 77TH TER & BOX 569
7:35 am	NW 36TH TER & NW 5TH ST
7:37 am	NW 36TH TER & NW 7TH ST
7:40 am	SW 18TH AVE & SW 2ND WAY
7:45 am	SES

### 35 SES AM

<u>TIME</u>	<u>LOCATION</u>
7:29 am	441 SE & BOX 2514
7:30 am	SE 18TH TER & BOX 3802
7:31 am	SE 18TH TER & SE 35TH LN
7:33 am	SE 18TH TER & SE 29TH ST
7:34 am	SE 18TH TERR & 50' AFTER SE 24TH BLVD
7:40 am	441 SE & SE 14TH TER
7:41 am	441 SE & BOX 833
7:45 am	SW 3RD AVE & BOX 1705
7:47 am	SW 2ND AVE & BOX 2404
7:50 am	SES

### 20 SES AM

<u>TIME</u>	<u>LOCATION</u>
7:35 am	NW 1ST ST & BOX 3465
7:36 am	NW 38TH TER & NW 1ST ST
7:37 am	NW 38TH TER & NW 4TH ST
7:43 am	SW 16TH ST & SW 40TH DR
7:44 am	SW 34TH TER & BOX 1652
7:45 am	SW 34TH TER & SW 19TH ST
7:46 am	SW 34TH TER & SW 22ND ST
7:48 am	SW 37TH AVE & SW 20TH ST
7:53 am	SW 15TH ST & BOX 909
7:55 am	SES

### 36 SES AM

<u>TIME</u>	<u>LOCATION</u>
7:40 am	NE 14TH AVE & NE 2ND ST
7:41 am	NE 14TH AVE & NE 6TH ST
7:42 am	NE 3RD ST & BOX 1761
7:47 am	441 S & TOWN CENTER APT
7:50 am	SES



\*\*\*ROUTE STOPS AND TIMES ARE SUBJECT TO CHANGE\*\*\*



# SOUTH ELEMENTARY

## PM BUS SCHEDULE

### 18 SES PM

<u>TIME</u>	<u>LOCATION</u>
2:50 pm	SES
3:04 pm	NW 36TH TER & NW 7TH ST
3:06 pm	NW 36TH TER & NW 5TH ST
3:12 pm	SW 85TH WAY & 50' BEFORE SW 10TH LN
3:13 pm	SW 86TH AVE & SW 14TH LN
3:15 pm	SW 14TH LN & SW 83RD AVE
3:20 pm	SW 87TH TER & SW 5TH LN
3:23 pm	SW 85TH AVE & BOX 300
3:25 pm	SW 77TH TER & BOX 569
3:30 pm	SW 18TH AVE & SW 2ND WAY

### 36 SES PM

<u>TIME</u>	<u>LOCATION</u>
2:50 pm	SES
2:58 pm	441 S & TOWN CENTER APT ENT
3:02 pm	NE 3RD ST & BOX 1761
3:04 pm	NE 14TH AVE & NE 6TH ST
3:05 pm	NE 14TH AVE & NE 2ND ST

### 19 SES PM

<u>TIME</u>	<u>LOCATION</u>
2:55 pm	SES
3:06 pm	SW 16TH AVE & BOX 3806
3:07 pm	SW 39TH LN & SW 13TH TERR
3:10 pm	SW 53RD ST & BOX 1952
3:13 pm	78 W & BOX 7655
3:18 pm	BHR COMMUNITY CENTER
3:35 pm	SW 28TH ST & OAK LAKE APTS

### 20 SES PM

<u>TIME</u>	<u>LOCATION</u>
2:55 pm	SES
3:02 pm	SW 15TH ST & BOX 909
3:06 pm	SW 34TH TER & BOX 1652
3:07 pm	SW 34TH TER & SW 19TH ST
3:08 pm	SW 34TH TER & SW 22ND ST
3:09 pm	SW 37TH AVE & SW 20TH ST
3:15 pm	NW 1ST ST & BOX 3465
3:16 pm	NW 1ST ST & NW 38TH TER
3:17 pm	NW 38TH TER & NW 4TH ST
3:22 pm	SW 16TH ST & SW 40TH DR

### 35 SES PM

<u>TIME</u>	<u>LOCATION</u>
2:55 pm	SES
3:03 pm	SW 3RD AVE & BOX 1705
3:05 pm	SW 2ND AVE & BOX 2404
3:10 pm	441 SE & BOX 2514
3:11 pm	SE 18TH TER & SE & BOX 3802
3:12 pm	SE 18TH TER & SE 35TH LN
3:14 pm	SE 18TH TER & SE 29TH ST
3:15 pm	SE 18TH TER & 50' AFTER 24TH BLVD
3:21 pm	441 SE & SE 14TH TER
3:22 pm	441 SE & BOX 833



\*\*\*ROUTE STOPS AND TIMES ARE SUBJECT TO CHANGE\*\*\*





# OSCEOLA MIDDLE SCHOOL

## AM BUS SCHEDULE

### 16 OMS AM

<u>TIME</u>	<u>LOCATION</u>
7:40 am	70 E & NE 56TH AVE
7:47 am	NE 7TH ST & BOX 9875
7:49 am	NE 96TH AVE & BOX 1044
7:55 am	NE 103RD AVE & NE 23RD LN
7:57 am	NE 103RD AVE & NE 11TH CT
7:58 am	NE 106TH CT & DEAD END SIGN
8:03 am	NE 112TH AVE & NE 32ND ST
8:08 am	NE 128TH AVE & NE 25TH ST
8:09 am	NE 128TH AVE & NE 20TH CT
8:12 am	SE 128TH AVE & BOX 800
8:16 am	SE 34TH ST & SE 132ND AVE
8:18 am	SE 128TH AVE & BOX 4351
8:22 am	SE 46TH ST & SE 138TH AVE
8:25 am	SE 128TH AVE & BOX 4340
8:42 am	SE 6TH ST & SE 37TH TERR
8:43 am	SE 8TH ST & SE 38TH AVE
8:55 am	OMS

### 28 OMS AM

<u>TIME</u>	<u>LOCATION</u>
8:08 am	710 E & BOX 4650
8:14 am	SE 40TH AVE & SE 22ND CT
8:16 am	SE 28TH ST & SE 44TH AVE
8:18 am	SE 39TH AVE & SE 29TH CT
8:20 am	SE 38TH AVE & BOX 3321
8:21 am	441 SE & BOX 3525
8:23 am	441 SE & BOX 2526
8:30 am	OMS

### 31 OMS AM

<u>TIME</u>	<u>LOCATION</u>
8:13 am	NE 82ND AVE & NE 12TH LN
8:14 am	NE 80TH AVE & NE 8TH DR
8:20 am	SE 68TH AVE & SE 8TH ST
8:22 am	SE 60TH AVE & BOX 258
8:24 am	NE 60TH AVE & NE 4TH LN
8:25 am	NE 60TH AVE & NE 8TH ST
8:26 am	NE 60TH AVE & NE 9TH WAY
8:27 am	NE 62ND AVE & NE 7TH ST
8:27 am	NE 62ND AVE & NE 4TH ST
8:40 am	OMS

### 01 OMS AM

<u>TIME</u>	<u>LOCATION</u>
8:16 am	441 SE & BOX 14141
8:18 am	SE 138TH BLVD & 441 SE
8:21 am	441 SE & SE 118TH TRL
8:25 am	441 SE & BOX 8485
8:26 am	441 SE & BOX 7777
8:28 am	441 SE & BOX 6070
8:30 am	441 SE & SE 50TH AVE
8:31 am	441 SE & CYPRUSS HUT
8:32 am	441 SE & SE 42ND PL
8:40 am	OMS

### 27 OMS AM

<u>TIME</u>	<u>LOCATION</u>
8:21 am	SE 57TH DR & SE 89TH TER
8:24 am	SE 57TH DR & SE 80TH TRL
8:27 am	SE 59TH DR & SE 85TH TER
8:30 am	SE 57TH DR & SE 93RD TRL
8:31 am	SE 59TH DR & SE 91ST TRL
8:35 am	SE 67TH DR & SE 88TH TRL
8:36 am	SE 87TH TRL & SE 68TH DR
8:41 am	441 SE & BOX 5390
8:46 am	441 SE & SE 14TH TER
8:50 am	OMS

### 30 OMS AM

<u>TIME</u>	<u>LOCATION</u>
8:26 am	SE 16TH AVE & SE 6TH LN
8:27 am	SE 14TH AVE & SE 8TH ST
8:30 am	SE 9TH AVE & SE 12TH ST
8:32 am	SE 21ST ST & SE 9TH AVE
8:35 am	SE 10TH ST & SE 8TH AVE
8:36 am	SE 8TH AVE & SE 8TH ST
8:37 am	SE 8TH AVE & SE 3RD ST
8:45 am	OMS

\*\*\*ROUTE STOPS AND TIMES ARE SUBJECT TO CHANGE\*\*\*



# OSCEOLA MIDDLE SCHOOL

## AM BUS SCHEDULE

### 42 OMS AM

<u>TIME</u>	<u>LOCATION</u>
8:23 am	NE 64TH AVE & NE 10TH LN
8:24 am	NE 64TH AVE & NE 7TH LN
8:25 am	NE 64TH AVE & NE 2ND ST
8:26 am	SE 66TH AVE & CENTER ST
8:29 am	NE 70TH AVE & NE 1ST ST
8:32 am	NE 70TH AVE & NE 5TH ST
8:33 am	NE 70TH AVE & NE 11TH ST
8:45 am	OMS

### 07 OMS AM

<u>TIME</u>	<u>LOCATION</u>
8:24 am	SE 16TH AVE & SE 2ND ST
8:26 am	SE 10TH AVE & SE 6TH ST
8:28 am	SE 10TH AVE & J&W MHP
8:30 am	SE 4TH AVE & SE 4TH ST
8:33 am	SW 7TH AVE & SW 9TH ST
8:35 am	SW 3RD AVE & SW 10TH ST
8:37 am	SW 3RD AVE & SW 13TH ST
8:38 am	SW 19TH ST & SW 5TH DR
8:41 am	SW 3RD AVE & SW 23RD ST
8:45 am	OMS

### 25 OMS AM

<u>TIME</u>	<u>LOCATION</u>
8:27 am	SE 26TH ST & BOX 4033
8:29 am	SE 34TH DR & SE 25TH ST
8:31 am	SE 43RD AVE & SE 27TH ST
8:33 am	SE 28TH ST & SE 35TH AVE
8:35 am	SE 34TH AVE & BOX 3411
8:36 am	441 SE & SE 33RD TER
8:38 am	SE 18TH TER & SE 38TH TRL
8:39 am	SE 18TH TER & SE 34TH LN
8:45 am	OMS

### 36 OMS AM

<u>TIME</u>	<u>LOCATION</u>
8:27 am	NE 18TH TER & BTWN NE 3RD & 4TH ST
8:29 am	NE 16TH AVE & NE 8TH ST
8:30 am	NE 16TH AVE & NE 12TH ST
8:30 am	NE 16TH AVE & NE 14TH ST
8:32 am	NE 14TH AVE & NE 10TH ST
8:33 am	NE 14TH AVE & NE 6TH ST
8:34 am	70 E & RIVER RUN
8:40 am	OMS

### 17 OMS AM

<u>TIME</u>	<u>LOCATION</u>
8:28 am	SE 18TH TER & SE 30TH ST
8:29 am	SE 29TH ST & BOX 2302
8:32 am	SE 24TH BLVD & SE 25TH DR
8:34 am	SE 27TH AVE & SE 25TH DR
8:38 am	441 SE & SHANNON'S OAKS
8:42 am	SW 2ND AVE & SW 18TH ST
8:45 am	OMS

### 06 OMS AM

<u>TIME</u>	<u>LOCATION</u>
8:29 am	SW 21ST PKWY & SW 69TH TER
8:37 am	SW 9TH ST & SW 85TH WAY
8:39 am	SW 87TH TER & SW 5TH LN
8:44 am	SW 18TH AVE & SW 2ND WAY
8:46 am	SW 10TH AVE & SW 9TH ST
8:50 am	OMS

\*\*\*ROUTE STOPS AND TIMES ARE SUBJECT TO CHANGE\*\*\*



# OSCEOLA MIDDLE SCHOOL

## AM BUS SCHEDULE

### 05 OMS AM

<u>TIME</u>	<u>LOCATION</u>
8:30 am	70 W & NW 30TH TER
8:32 am	NW 36TH TER & NW 4TH ST
8:34 am	SW 24TH AVE & SW 8TH ST
8:40 am	OMS

### 19 OMS AM

<u>TIME</u>	<u>LOCATION</u>
8:31 am	BHR COMMUNITY CENTER
8:35 am	78 W & BOX 9340
8:36 am	78 W & BOX 8825
8:40 am	SW 53RD ST & BOX 1952
8:45 am	OMS

### 35 OMS AM

<u>TIME</u>	<u>LOCATION</u>
8:32 am	NW 32ND AVE & NW 2ND ST
8:35 am	NW 38TH TER & BOX 95
8:39 am	SW 11TH AVE & SW 3RD ST
8:41 am	SW 8TH ST & SW 13TH AVE
8:42 am	SW 11TH ST & SW 13TH AVE
8:45 am	OMS

### 20 OMS AM

<u>TIME</u>	<u>LOCATION</u>
8:35 am	SW 15TH ST & SW 10TH AVE
8:36 am	SW 16TH ST & SW 19TH TER
8:37 am	SW 16TH ST & SW 22ND TER
8:41 am	SW 34TH TER & SW 17TH ST
8:42 am	SW 34TH TER & SW 22ND ST
8:45 am	SW 24TH AVE & SW 33RD CIR
8:47 am	SW 28TH ST & OAK LAKE VILLAS
8:50 am	OMS



\*\*\*ROUTE STOPS AND TIMES ARE SUBJECT TO CHANGE\*\*\*





# OSCEOLA MIDDLE SCHOOL

## PM BUS SCHEDULE

### 01 OMS PM

<u>TIME</u>	<u>LOCATION</u>
3:40 pm	OMS
3:53 pm	441 SE & SE 42ND PL
3:54 pm	4701 US HWY 441 SE
3:56 pm	441 SE & SE 50TH AVE
3:58 pm	441 SE & BOX 6070
4:00 pm	441 SE & BOX 7777
4:01 pm	441 SE & BOX 8485
4:05 pm	441 SE & SE 118TH TRL
4:08 pm	SE 138TH BLVD & US HIGHWAY 441 SE
4:09 pm	441 SE & BOX 14141

### 05 OMS PM

<u>TIME</u>	<u>LOCATION</u>
3:40 pm	OMS
3:51 pm	SW 24TH AVE & SW 8TH ST
3:54 pm	70 W & NW 30TH TER
3:56 pm	NW 36TH TER & NW 4TH ST

### 16 OMS PM

<u>TIME</u>	<u>LOCATION</u>
3:40 pm	OMS
3:55 pm	SE 6TH ST & SE 37TH TERR
3:57 pm	SE 8TH ST & SE 38TH AVE
4:01 pm	70 E & NE 56TH AVE
4:07 pm	NE 96TH AVE & BOX 1044
4:13 pm	NE 103RD AVE & NE 23RD LN
4:17 pm	NE 103RD AVE & NE 11TH CT
4:18 pm	NE 106TH CT & YELLOW DEAD END SIGN
4:25 pm	NE 128TH AVE & NE 25TH ST
4:27 pm	NE 128TH AVE & NE 20TH CT
4:29 pm	SE 128TH AVE & BOX 800
4:32 pm	SE 34TH ST & SE 132ND AVE

### 20 OMS PM

<u>TIME</u>	<u>LOCATION</u>
3:40 pm	OMS
3:48 pm	SW 15TH ST & SW 10TH AVE
3:49 pm	SW 16TH ST & SW 19TH TER
3:51 pm	SW 16TH ST & SW 22ND TER
3:53 pm	SW 34TH TER & SW 17TH ST
3:54 pm	SW 34TH TER & SW 22ND ST
3:57 pm	SW 24TH AVE & SW 33RD CIR
3:59 pm	SW 28TH ST & OAK LAKE VILLAS

### 25 OMS PM

<u>TIME</u>	<u>LOCATION</u>
3:40 pm	OMS
3:53 pm	441 SE & BOX 2526
3:54 pm	441 SE & BOX 3525
3:56 pm	SE 38TH AVE & BOX 3321
3:57 pm	SE 39TH AVE & SE 29TH CT
3:59 pm	SE 28TH ST & SE 44TH AVE
4:01 pm	SE 40TH AVE & SE 22ND CT
4:05 pm	710 E & BOX 4650

### 31 OMS PM

<u>TIME</u>	<u>LOCATION</u>
3:40 pm	OMS
3:56 pm	NE 60TH AVE & NE 9TH WAY
3:57 pm	NE 60TH AVE & NE 4TH LN
3:59 pm	NE 62ND AVE & NE 4TH ST
4:00 pm	NE 62ND AVE & NE 7TH ST
4:03 pm	NE 82ND AVE & NE 12TH LN
4:05 pm	NE 80TH AVE & NE 8TH DR
4:10 pm	SE 68TH AVE & SE 8TH ST
4:13 pm	SE 60TH AVE & BOX 258

\*\*\*ROUTE STOPS AND TIMES ARE SUBJECT TO CHANGE\*\*\*



# OSCEOLA MIDDLE SCHOOL

## PM BUS SCHEDULE

### 30 OMS PM

<u>TIME</u>	<u>LOCATION</u>
3:50 pm	OMS
4:01 pm	SE 8TH AVE & SE 3RD ST
4:02 pm	SE 8TH AVE & SE 8TH ST
4:04 pm	SE 10TH ST & SE 8TH AVE
4:06 pm	SE 21ST ST & SE 9TH AVE
4:09 pm	SE 9TH AVE & SE 12TH ST
4:11 pm	SE 14TH AVE & SE 8TH ST
4:12 pm	SE 16TH AVE & SE 6TH LN

### 35 OMS PM

<u>TIME</u>	<u>LOCATION</u>
3:55 pm	OMS
4:05 pm	SW 11TH ST & SW 13TH AVE
4:06 pm	SW 8TH ST & SW 13TH AVE
4:08 pm	SW 11TH AVE & SW 3RD ST
4:10 pm	NW 32ND AVE & NW 2ND ST
4:13 pm	NW 38TH TER & BOX 95

### 06 OMS PM

<u>TIME</u>	<u>LOCATION</u>
4:00 pm	OMS
4:09 pm	SW 10TH AVE & SW 9TH ST
4:12 pm	SW 18TH AVE & SW 2ND WAY
4:18 pm	SW 21ST PKWY & SW 69TH TER
4:26 pm	SW 9TH ST & SW 85TH WAY
4:28 pm	SW 87TH TER & SW 5TH LN



\*\*\*ROUTE STOPS AND TIMES ARE SUBJECT TO CHANGE\*\*\*



# OSCEOLA MIDDLE SCHOOL

## PM BUS SCHEDULE

### 36 OMS PM

<u>TIME</u>	<u>LOCATION</u>
3:40 pm	OMS
3:52 pm	NE 18TH TER & BTWN NE 3RD & 4TH ST
3:54 pm	NE 16TH AVE & NE 8TH ST
3:55 pm	NE 16TH AVE & NE 14TH ST
3:56 pm	NE 14TH AVE & NE 10TH ST
3:57 pm	NE 14TH AVE & NE 6TH ST
3:59 pm	70 E & RIVER RUN

### 42 OMS PM

<u>TIME</u>	<u>LOCATION</u>
3:40 pm	OMS
3:56 pm	NE 64TH AVE & NE 10TH LN
3:57 pm	NE 64TH AVE & NE 7TH LN
3:58 pm	NE 64TH AVE & NE 2ND ST
4:00 pm	SE 66TH AVE & CENTER ST
4:03 pm	NE 70TH AVE & NE 1ST ST
4:05 pm	NE 70TH AVE & NE 5TH ST
4:06 pm	NE 70TH AVE & NE 11TH ST

### 17 OMS PM

<u>TIME</u>	<u>LOCATION</u>
3:45 pm	OMS
3:53 pm	SW 2ND AVE & SW 18TH ST
4:00 pm	SE 29TH ST & BOX 2302
4:03 pm	SE 24TH BLVD & SE 25TH DR
4:04 pm	SE 27TH AVE & SE 25TH DR
4:08 pm	441 SE & SHANNON'S OAKS

### 19 OMS PM

<u>TIME</u>	<u>LOCATION</u>
3:45 pm	OMS
3:51 pm	SW 53RD ST & BOX 1952
4:02 pm	BHR COMMUNITY CENTER
4:07 pm	78 W & BOX 9340
4:09 pm	78 W & BOX 8825

### 07 OMS PM

<u>TIME</u>	<u>LOCATION</u>
3:50 pm	OMS
4:02 pm	SW 3RD AVE & SW 23RD ST
4:04 pm	SW 19TH ST & SW 5TH DR
4:06 pm	SW 3RD AVE & SW 13TH ST
4:07 pm	SW 3RD AVE & SW 10TH ST
4:10 pm	SW 7TH AVE & SW 9TH ST
4:12 pm	SE 4TH ST & SE 4TH AVE
4:15 pm	SE 16TH AVE & SE 2ND ST
4:17 pm	SE 10TH AVE & SE 6TH ST
4:18 pm	SE 10TH AVE & J&W MHP

### 27 OMS PM

<u>TIME</u>	<u>LOCATION</u>
3:50 pm	OMS
4:00 pm	441 SE & SE 14TH TER
4:04 pm	441 SE & BOX 5390
4:09 pm	SE 67TH DR & SE 88TH TRL
4:12 pm	SE 57TH DR & SE 93RD TRL
4:14 pm	SE 59TH DR & SE 91ST TRL
4:16 pm	SE 57TH DR & SE 89TH TER
4:19 pm	SE 57TH DR & SE 80TH TRL
4:22 pm	SE 59TH DR & SE 85TH TER

\*\*\*ROUTE STOPS AND TIMES ARE SUBJECT TO CHANGE\*\*\*





# YEARLING MIDDLE SCHOOL

## AM BUS SCHEDULE

### 33 YMS AM

<u>TIME</u>	<u>LOCATION</u>
7:43 am	NE 48TH AVE & LARSON 4
7:55 am	NE 304TH ST & NE 65TH TER
8:07 am	441 N & NE 308TH ST
8:13 am	NE 366TH TRL & NE 9TH DR
8:16 am	NW 364TH RD & BOX 864
8:19 am	NW 392ND ST & NW 24TH DR
8:30 am	NE 300TH ST & CENTER AVE
8:50 am	YMS

### 24 YMS AM

<u>TIME</u>	<u>LOCATION</u>
7:47 am	NE 168TH ST & FIRE STATION
7:49 am	441 N & MCARTHUR 1 (18112)
7:51 am	441 N & NE 207TH ST (MCARTHUR 3)
7:58 am	NE 224TH ST & BOX 5620
8:07 am	NE 160TH ST & NE 1ST WAY
8:16 am	NW 32ND AVE & NW 175TH CT
8:18 am	NW 160TH ST & BOX 3253
8:20 am	NW 38TH AVE & NW 167TH CT
8:29 am	NW 160TH ST & PETE BEATTY RANCH OFFICE
8:44 am	NW 144TH DR & NW 9TH AVE
8:45 am	NW 144TH DR & BOX 356
8:55 am	YMS

### 02 YMS AM

<u>TIME</u>	<u>LOCATION</u>
7:50 am	BROADLAND LN & KELTON TER
7:51 am	BROADLAND LN & JORDAN TER
7:55 am	SW RUCKS DAIRY RD & BOX 2527
8:25 am	NW 149TH TER & NW 63RD LN
8:43 am	NW 28TH AVE & NW 4TH ST
8:44 am	NW 26TH AVE & NW 6TH ST
8:50 am	YMS

### 29 YMS AM

<u>TIME</u>	<u>LOCATION</u>
8:04 am	NW 192ND AVE & NW 320TH ST
8:06 am	NW 192ND AVE & NW 304TH ST
8:08 am	NW 192ND AVE & NW 288TH ST
8:16 am	NW 192ND AVE & NW 248TH ST
8:22 am	NW 176TH AVE & NW 248TH ST
8:26 am	NW 176TH AVE & NW 184TH DR
8:42 am	NW 36TH ST & NW 40TH DR
8:43 am	NW 36TH ST & NW 38TH AVE
8:50 am	YMS

### 41 YMS AM

<u>TIME</u>	<u>LOCATION</u>
8:05 am	NW 160TH DR & NW 214TH CIR
8:24 am	NW 144TH TRL & BOX 8650
8:32 am	98 N & BISHOP DAIRY
8:41 am	98 N & LARSON DAIRY
8:43 am	NW 36TH ST & NW 33RD AVE
8:45 am	NW 36TH ST & NW 23RD AVE
8:50 am	YMS

### 21 YMS AM

<u>TIME</u>	<u>LOCATION</u>
8:16 am	70 E & GRACEWOOD SERVICE RD
8:24 am	NE 80TH AVE & NE 37TH ST
8:27 am	70 E & NE 71ST AVE
8:28 am	70 E & NE 64TH DR
8:31 am	NE 32ND AVE & NE 8TH ST
8:33 am	NE 11TH LN & NE 29TH TER
8:34 am	NE 28TH AVE & NE 8TH ST
8:37 am	70 E & RIVER RUN
8:39 am	NE 6TH ST & NE 4TH AVE
8:40 am	441 N & NE 11TH ST
8:42 am	NW 11TH ST & NW 3RD AVE
8:45 am	YMS

\*\*\*ROUTE STOPS AND TIMES ARE SUBJECT TO CHANGE\*\*\*



# YEARLING MIDDLE SCHOOL

## AM BUS SCHEDULE

### 26 YMS AM

<u>TIME</u>	<u>LOCATION</u>
8:16 am	NW 144TH AVE & NW 304TH ST
8:22 am	NW 144TH AVE & NW 272ND ST
8:24 am	NW 144TH AVE & NW 256TH ST
8:26 am	NW 144TH AVE & NW 248TH ST
8:28 am	NW 240TH ST & BOX 12600
8:42 am	441 N & MAC 4
8:47 am	441 N & BOX 12600
8:55 am	YMS

### 15 YMS AM

<u>TIME</u>	<u>LOCATION</u>
8:20 am	NE 120TH ST & BOX 7480
8:22 am	NE 120TH ST & BOX 6175
8:31 am	NE 131ST LN & NE 26TH AVE
8:32 am	NE 131ST LN & NE 22ND AVE
8:40 am	NW 36TH ST & NW 4TH AVE
8:41 am	NW 36TH ST & NW 8TH AVE
8:45 am	YMS

### 40 YMS AM

<u>TIME</u>	<u>LOCATION</u>
8:28 am	98 N & MILKING R
8:30 am	98 N & NW 67TH LN
8:32 am	NW 80TH AVE & NW 82ND CT
8:33 am	NW 80TH AVE & NW 86TH CT
8:35 am	NW 80TH AVE & NW 92ND CT
8:36 am	NW 80TH AVE & NW 96TH CT
8:45 am	NW 36TH ST & NW 18TH AVE
8:50 am	YMS

### 39 YMS AM

<u>TIME</u>	<u>LOCATION</u>
8:31 am	NE 54TH TRL & NE 62ND PKWY
8:42 am	NW 32ND ST & NW 34TH AVE
8:44 am	NW 36TH ST & NW 28TH AVE
8:50 am	YMS

### 18 YMS AM

<u>TIME</u>	<u>LOCATION</u>
8:32 am	NW 22ND AVE & NW 4TH ST
8:35 am	NW 18TH ST & NW 38TH AVE
8:36 am	NW 18TH ST & NW 42ND AVE
8:39 am	NW 18TH ST & NW 44TH AVE
8:40 am	NW 18TH ST & NW 45TH TER
8:50 am	YMS

### 32 YMS AM

<u>TIME</u>	<u>LOCATION</u>
8:37 am	70 W & BOX 1659
8:39 am	NW 18TH AVE & NW 6TH ST
8:40 am	NW 11TH AVE & NW 3RD ST
8:44 am	NW 2ND AVE & NW 6TH ST
8:46 am	NW 9TH AVE & NW 7TH ST
8:50 am	YMS

\*\*\*ROUTE STOPS AND TIMES ARE SUBJECT TO CHANGE\*\*\*



# YEARLING MIDDLE SCHOOL

## AM BUS SCHEDULE

### 10 YMS AM

<u>TIME</u>	<u>LOCATION</u>
8:38 am	NE 102ND ST & CENTER AVE
8:40 am	NW 102ND ST & NW 8TH AVE
8:47 am	NW 36TH ST & NW 10TH AVE
8:50 am	YMS

### 14 YMS AM

<u>TIME</u>	<u>LOCATION</u>
8:38 am	NW 46TH AVE & VILLAS
8:39 am	NW 30TH ST & NW 47TH AVE
8:50 am	YMS



## PM BUS SCHEDULE

### 10 YMS PM

<u>TIME</u>	<u>LOCATION</u>
3:40 pm	YMS
3:49 pm	NW 36TH ST & NW 10TH AVE
3:54 pm	NE 102ND ST & CENTER AVE
3:56 pm	NW 102ND ST & NW 8TH AVE

### 18 YMS PM

<u>TIME</u>	<u>LOCATION</u>
3:40 pm	YMS
3:51 pm	NW 18TH ST & NW 38TH AVE
3:52 pm	NW 18TH ST & NW 42ND AVE
3:55 pm	NW 18TH ST & NW 44TH AVE
3:56 pm	NW 18TH ST & NW 45TH TER
4:02 pm	NW 22ND AVE & NW 4TH ST

### 24 YMS PM

<u>TIME</u>	<u>LOCATION</u>
3:40 pm	YMS
3:55 pm	NE 168TH ST & FIRE STATION
3:58 pm	441 N & MCARTHUR 1 (18000)
4:00 pm	441 N & MAC 3 (207TH ST)
4:07 pm	NE 224TH ST & BOX 5620
4:17 pm	NE 160TH ST & NE 1ST WAY
4:21 pm	NW 32ND AVE & NW 175TH CT
4:23 pm	NW 160TH ST & BOX 3253
4:25 pm	NW 38TH AVE & NW 167TH CT
4:34 pm	NW 160TH ST & PETE BEATTY RANCH OFFICE
4:49 pm	NW 144TH DR & NW 9TH AVE

\*\*\*ROUTE STOPS AND TIMES ARE SUBJECT TO CHANGE\*\*\*





# YEARLING MIDDLE SCHOOL

## PM BUS SCHEDULE

### 32 YMS PM

<u>TIME</u>	<u>LOCATION</u>
3:40 pm	YMS
3:47 pm	NW 9TH AVE & NW 7TH ST
3:49 pm	NW 2ND AVE & NW 6TH ST
3:53 pm	NW 11TH AVE & NW 3RD ST
3:55 pm	70 W & BOX 1659
3:57 pm	NW 18TH AVE & NW 6TH ST

### 40 YMS PM

<u>TIME</u>	<u>LOCATION</u>
3:40 pm	YMS
3:49 pm	NW 36TH ST & NW 18 AVE
3:54 pm	98 N & MILKING R
3:56 pm	98 N & NW 67TH LN
3:58 pm	NW 80TH AVE & NW 82ND CT
3:59 pm	NW 80TH AVE & NW 86TH CT
4:00 pm	NW 80TH AVE & NW 92ND CT
4:01 pm	NW 80TH AVE & NW 96TH CT

### 41 YMS PM

<u>TIME</u>	<u>LOCATION</u>
3:40 pm	YMS
3:50 pm	NW 36TH ST & NW 23 AVE
3:51 pm	NW 36TH ST & NW 33 AVE
3:53 pm	98 N & LANIER RANCH
4:02 pm	98 N & BISHOP DAIRY
4:15 pm	NW 144TH TRL & BOX 8650
4:35 pm	NW 160TH DR & NW 214TH CIR

### 14 YMS PM

<u>TIME</u>	<u>LOCATION</u>
3:45 pm	YMS
3:58 pm	NW 46TH AVE & VILLAS
4:02 pm	NW 30TH ST & NW 47TH AVE

### 02 YMS PM

<u>TIME</u>	<u>LOCATION</u>
3:50 pm	YMS
4:00 pm	NW 26TH AVE & NW 6TH ST
4:01 pm	NW 28TH AVE & NW 4TH ST
4:20 pm	NW 149TH TER & NW 63RD LN
4:41 pm	SW RUCKS DAIRY RD & BOX 2527
4:47 pm	BROADLAND LN & JORDAN TER
4:49 pm	BROADLAND LN & KELTON TER

### 15 YMS PM

<u>TIME</u>	<u>LOCATION</u>
3:50 pm	YMS
3:58 pm	NW 36TH ST & NW 8TH AVE
3:59 pm	NW 36TH ST & NW 4TH AVE
4:07 pm	NE 131ST LN & NE 22ND AVE
4:08 pm	NE 131ST LN & NE 26TH AVE
4:18 pm	NE 120TH ST & BOX 6175
4:19 pm	NE 120TH ST & BOX 7480

\*\*\*ROUTE STOPS AND TIMES ARE SUBJECT TO CHANGE\*\*\*



# YEARLING MIDDLE SCHOOL

## PM BUS SCHEDULE

21 YMS PM	
<u>TIME</u>	<u>LOCATION</u>
3:50 pm	YMS
3:57 pm	NW 3RD AVE & NW 11TH ST
4:12 pm	70 E & GRACEWOOD SERVICE RD
4:19 pm	NE 80TH AVE & NE 37TH ST
4:23 pm	70 E & NE 71ST AVE
4:24 pm	70 E & NE 64TH DR
4:27 pm	NE 32ND AVE & NE 8TH ST
4:28 pm	NE 11TH LN & NE 29TH TER
4:29 pm	NE 28TH AVE & NE 8TH ST
4:32 pm	70 E & RIVER RUN
4:34 pm	NE 6TH ST & NE 4TH AVE
4:36 pm	441 N & NE 11TH ST

21 YMS PM	
TIME	LOCATION
3:50 pm	YMS
3:57 pm	NW 3RD AVE & NW 11TH ST
4:12 pm	70 E & GRACEWOOD SERVICE RD
4:19 pm	NE 80TH AVE & NE 37TH ST
4:23 pm	70 E & NE 71ST AVE
4:24 pm	70 E & NE 64TH DR
4:27 pm	NE 32ND AVE & NE 8TH ST
4:28 pm	NE 11TH LN & NE 29TH TER
4:29 pm	NE 28TH AVE & NE 8TH ST
4:32 pm	70 E & RIVER RUN
4:34 pm	NE 6TH ST & NE 4TH AVE
4:36 pm	441 N & NE 11TH ST

26 YMS PM	
<u>TIME</u>	<u>LOCATION</u>
3:50 pm	YMS
4:02 pm	441 N & BOX 12600
4:07 pm	441 N & MAC 4 (17000)
4:29 pm	NW 240TH ST & BOX 12500
4:31 pm	NW 144TH AVE & NW 248TH ST
4:33 pm	NW 144TH AVE & NW 256TH ST
4:35 pm	NW 144TH AVE & NW 272ND ST
4:41 pm	NW 144TH AVE & NW 304TH ST

26 YMS PM	
<u>TIME</u>	<u>LOCATION</u>
3:50 pm	YMS
4:02 pm	441 N & BOX 12600
4:07 pm	441 N & MAC 4 (17000)
4:29 pm	NW 240TH ST & BOX 12500
4:31 pm	NW 144TH AVE & NW 248TH ST
4:33 pm	NW 144TH AVE & NW 256TH ST
4:35 pm	NW 144TH AVE & NW 272ND ST
4:41 pm	NW 144TH AVE & NW 304TH ST

<u>TIME</u>	<u>LOCATION</u>
3:50 pm	YMS
4:02 pm	NW 36TH ST & NW 38TH AVE
4:02 pm	NW 36TH ST & NW 40TH DR
4:19 pm	NW 176TH AVE & NW 184TH DR
4:23 pm	NW 176TH AVE & NW 208TH ST
4:28 pm	NW 192ND AVE & NW 248TH ST
4:36 pm	NW 192ND AVE & NW 288TH ST
4:39 pm	NW 192ND AVE & NW 304TH ST
4:41 pm	NW 192ND AVE & NW 320TH ST

<u>TIME</u>	<u>LOCATION</u>
3:50 pm	YMS
4:02 pm	NW 36TH ST & NW 38TH AVE
4:02 pm	NW 36TH ST & NW 40TH DR
4:19 pm	NW 176TH AVE & NW 184TH DR
4:23 pm	NW 176TH AVE & NW 208TH ST
4:28 pm	NW 192ND AVE & NW 248TH ST
4:36 pm	NW 192ND AVE & NW 288TH ST
4:39 pm	NW 192ND AVE & NW 304TH ST
4:41 pm	NW 192ND AVE & NW 320TH ST

<u>TIME</u>	<u>LOCATION</u>
3:50 pm	YMS
4:17 pm	NE 48TH AVE & LARSON 4
4:29 pm	NE 304TH ST & NE 65TH TER
4:40 pm	441 N & NE 308TH ST
4:47 pm	NE 366TH TRL & NE 9TH DR
4:50 pm	864 NW 364TH RD
4:53 pm	NW 392ND ST & NW 24TH DR
5:04 pm	NE 300TH ST & CENTER AVE

<u>TIME</u>	<u>LOCATION</u>
3:50 pm	YMS
4:17 pm	NE 48TH AVE & LARSON 4
4:29 pm	NE 304TH ST & NE 65TH TER
4:40 pm	441 N & NE 308TH ST
4:47 pm	NE 366TH TRL & NE 9TH DR
4:50 pm	864 NW 364TH RD
4:53 pm	NW 392ND ST & NW 24TH DR
5:04 pm	NE 300TH ST & CENTER AVE

39 YMS PM	
<u>TIME</u>	<u>LOCATION</u>
3:50 pm	YMS
4:00 pm	NW 36TH ST & NW 28 AVE
4:02 pm	NW 32ND ST & 1/2 WAY 34 & 35 AVE
4:18 pm	NE 54TH TRL & NE 62ND PKWY

39 YMS PM	
<u>TIME</u>	<u>LOCATION</u>
3:50 pm	YMS
4:00 pm	NW 36TH ST & NW 28 AVE
4:02 pm	NW 32ND ST & 1/2 WAY 34 & 35 AVE
4:18 pm	NE 54TH TRL & NE 62ND PKWY



**\*\*\*ROUTE STOPS AND TIMES ARE SUBJECT TO CHANGE\*\*\***

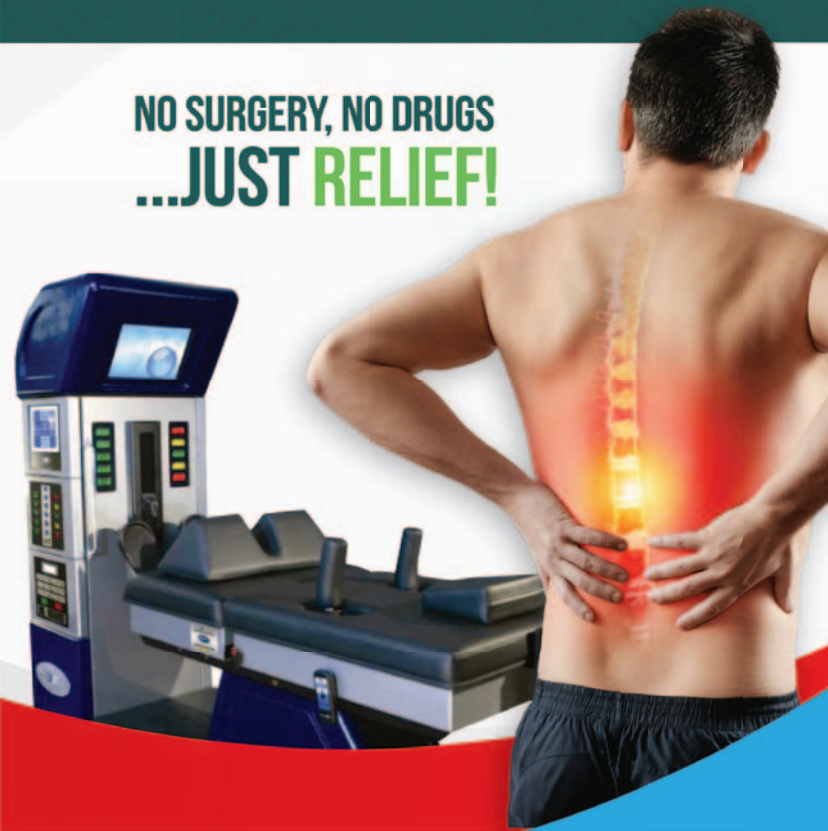
DRX9000

## DEEP TISSUE LASER THERAPY & SPINAL DECOMPRESSION

The **DRX9000 System** is rapidly becoming the most requested treatment method for low back pain, as well as most degenerative disc problems. Doctors, therapists, and insurance companies recognize the need for an extremely effective yet non-surgical treatment.

This totally non-invasive treatment has been shown to diminish or remove pain while increasing functional ability!

NO SURGERY, NO DRUGS  
...JUST RELIEF!



## GET BACK TO THE ACTIVITIES YOU LOVE TODAY!

If you want a very experienced doctor to help eliminate your low back pain, Dr. Charles Simpson is the one to do it! He's been in practice for a decade and is known to end pain within a few treatments using the DRX9000. Don't waste another second with pain in your life, come and let our family take care of yours.

REQUEST A **FREE CONSULTATION\***  
TODAY TO SEE HOW SPINAL  
DECOMPRESSION CAN HELP YOU!  
**863-410-2861**



**SIMPSON**  
ADVANCED CHIROPRACTIC  
& MEDICAL CENTER

**CALL TODAY!**  
**863-410-2861**

\*The patient or any other person responsible for payment has a right to refuse to pay, cancel payment, or be reimbursed for payment for any other service examination or treatment which is performed as a result of and within 72 hours of responding to the advertisement for the free service or treatment.



# "Caring Beyond Prescription"

## Heartland Discount Pharmacy

*Full Service Retail Pharmacy*

**WE PROMISE TO PROVIDE QUALITY  
SERVICE AT LOWEST PRICES**

*Your Neighborhood Pharmacy Where Customer Service &  
Personal Attention are Our #1 Priorities*



**Get to know  
your neighbor.**

**It's time to change  
your pharmacy**



**OUR GOAL IS TO MAKE HEALTHCARE  
MORE AFFORDABLE**

**Here is how we are different...**

**Does Your Pharmacy accommodate your special needs?**

**Does Your Pharmacy keep your prescriptions up to date with  
refills & stock status etc?**

**Does your Pharmacist have spare time to discuss your health?**

**Does Your Pharmacy have time to find ways to save you  
money on your prescriptions?**

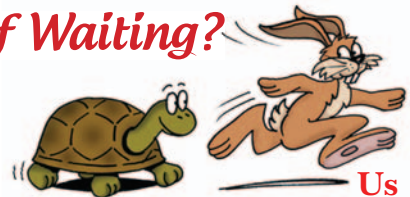
**Does Your Pharmacy handle SPECIALITY PRESCRIPTIONS and  
On Demand COMPOUNDING?**

## PHARMACY THE WAY IT'S SUPPOSED TO BE

- ◆ **Best cash price in town**
- ◆ **FREE same day home delivery**
- ◆ **We help patients not to fall into  
Medicare coverage gap or donut hole**
- ◆ **We match all Competitors' Generic  
Prescription Drug Programs**
- ◆ **We Accept All Insurances including  
Medicaid, Medicare, Part D and  
Worker's Compensation**
- ◆ **Flu and Pneumonia shots available**
- ◆ **Now providing non-sterile RX  
Compounding**

**Tired of Waiting?**

Other  
Pharmacies



**863.763.7633**  
**407 S. Parrott Ave • Okeechobee**

**Next to Arby's on 441**

**EXTENDED HOURS:**

**Monday-Friday 8am - 8pm • Sat. 9am - 5pm**

